

## Product name

NUSAP1 antibody

Recommended Dilution:

WB: 1:500-1:5000

## Specificity

Human, Mouse, Rat; other species not tested.

IP: 1:200-1:2000

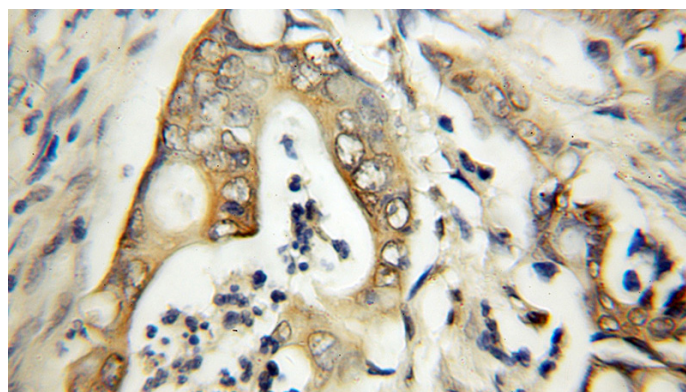
IHC: 1:20-1:200

## Antibody description

NUSAP1 Rabbit Polyclonal antibody. Positive IF detected in HepG2 cells. Positive IHC detected in human colon cancer tissue, human pituitary adenoma tissue, human prostate cancer tissue. Positive WB detected in rat colon tissue, HeLa cells, mouse kidney tissue, mouse thymus tissue. Positive IP detected in HeLa cells. Observed molecular weight by Western-blot: 47-52 kDa

IF: 1:20-1:200

## Validations



Immunohistochemical of paraffin-embedded human colon cancer using Catalog No:113448(NUSAP1 antibody) at dilution of 1:50 (under 10x lens)

## Preparation

This antibody was obtained by immunization of NUSAP1 recombinant protein (Accession Number: NM\_018454). Purification method: Antigen affinity purified.

## Formulation

PBS with 0.1% sodium azide and 50% glycerol pH 7.3.

## Storage

Store at -20°C. DO NOT ALIQUOT

## Clonality

Polyclonal

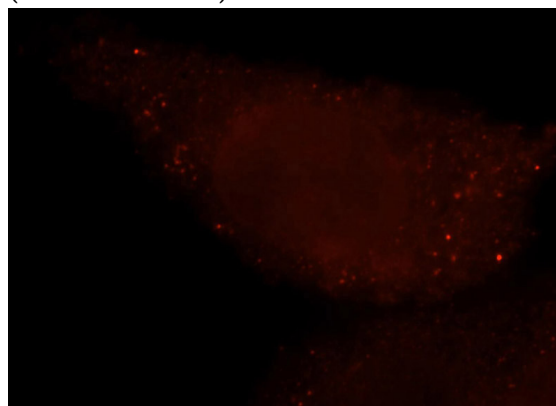
## Ig Type

Rabbit IgG

## Applications

ELISA, IHC, IF, WB, IP

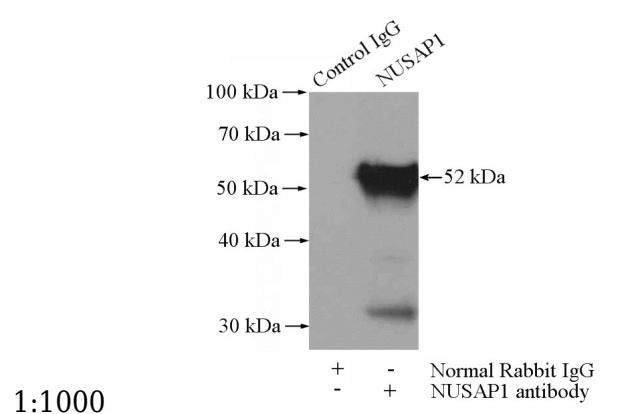
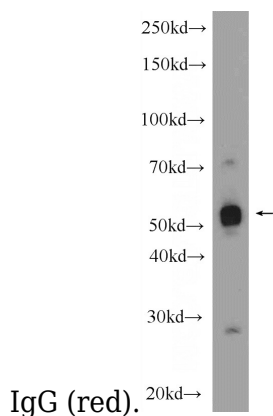
## Dilutions



Immunofluorescent analysis of HepG2 cells, using NUSAP1 antibody Catalog No:113448 at 1:50 dilution and Rhodamine-labeled goat anti-rabbit

# NUSAP1 antibody

Catalog Number: 113448



1:1000

rat colon tissue were subjected to SDS PAGE followed by western blot with Catalog No:113448(NUSAP1 Antibody) at dilution of

IP Result of anti-NUSAP1 (IP:Catalog No:113448, 4ug; Detection:Catalog No:113448 1:500) with HeLa cells lysate 2000ug.