

OSCP antibody



Catalog Number: 113435

Product name

OSCP antibody

Specificity

Human, Mouse, Rat; other species not tested.

Antibody description

OSCP Rabbit Polyclonal antibody. Positive FC detected in HepG2 cells. Positive IF detected in HepG2 cells. Positive IHC detected in human heart tissue, human colon cancer tissue, human testis tissue. Positive WB detected in HEK-293 cells, human kidney tissue, human placenta tissue, mouse colon tissue, mouse heart tissue, mouse liver tissue, mouse placenta tissue. Observed molecular weight by Western-blot: 23-25kd

Preparation

This antibody was obtained by immunization of OSCP recombinant protein (Accession Number: NM_001697). Purification method: Antigen affinity purified.

Formulation

PBS with 0.1% sodium azide and 50% glycerol pH 7.3.

Storage

Store at -20°C. DO NOT ALIQUOT

Clonality

Polyclonal

Ig Type

Rabbit IgG

Applications

ELISA, WB, IHC, IF, FC

Dilutions

Recommended Dilution:

WB: 1:500-1:5000

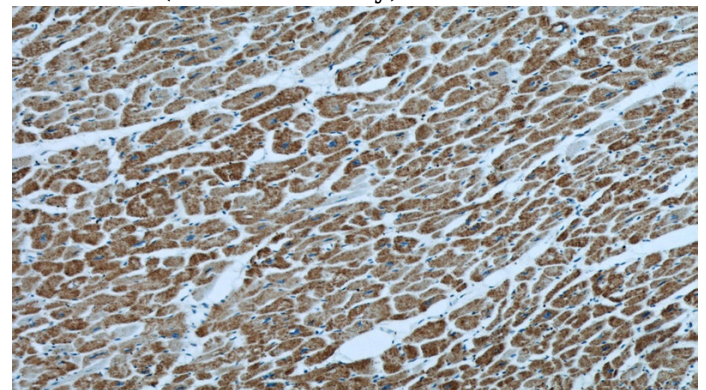
IHC: 1:20-1:200

IF: 1:20-1:200

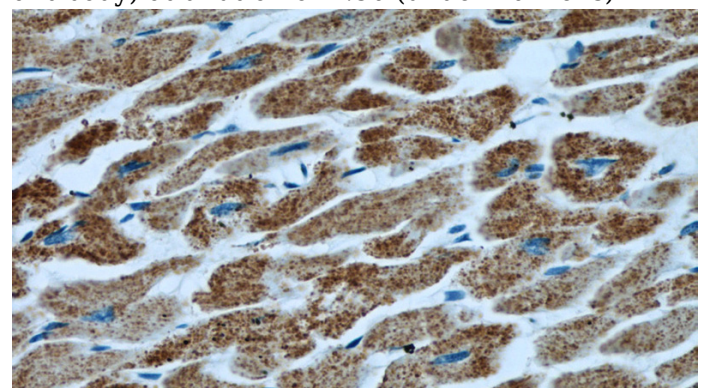
Validations



HEK-293 cells were subjected to SDS PAGE followed by western blot with Catalog No:113435(ATP5O antibody) at dilution of 1:1000



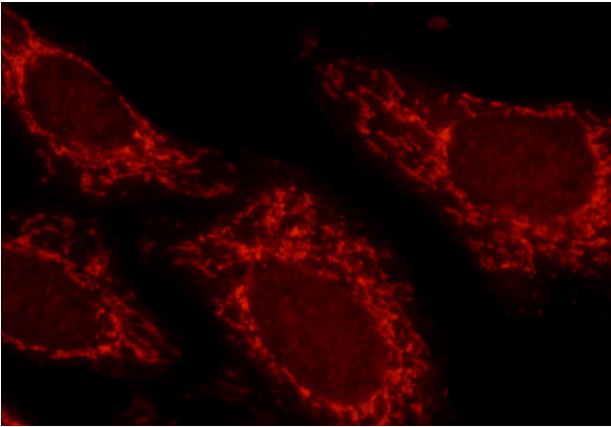
Immunohistochemical of paraffin-embedded human heart using Catalog No:113435(ATP5O antibody) at dilution of 1:50 (under 10x lens)



OSCP antibody

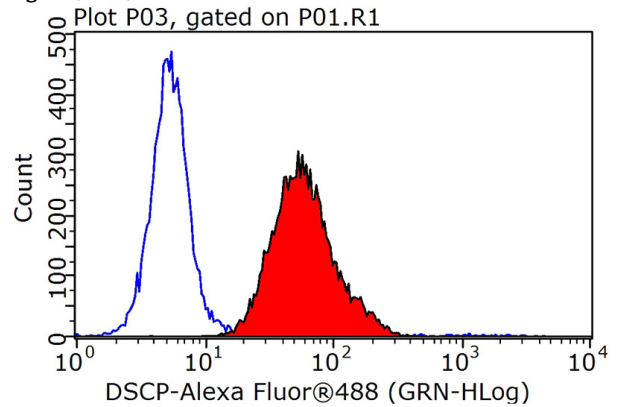
Catalog Number: 113435

Immunohistochemical of paraffin-embedded human heart using Catalog No:113435(ATP5O antibody) at dilution of 1:50 (under 40x lens)



Immunofluorescent analysis of HepG2 cells, using ATP5O antibody Catalog No:113435 at 1:50 dilution and Rhodamine-labeled goat anti-rabbit

IgG (red).



1×10^6 HepG2 cells were stained with 0.2ug ATP5O antibody (Catalog No:113435, red) and control antibody (blue). Fixed with 90% MeOH blocked with 3% BSA (30 min). Alexa Fluor 488-conjugated AffiniPure Goat Anti-Rabbit IgG(H+L) with dilution 1:1000.