

# OSBPL11 antibody

Catalog Number: 113430

## Product name

OSBPL11 antibody

IP: 1:200-1:1000

IHC: 1:20-1:200

## Specificity

Human; other species not tested.

## Antibody description

OSBPL11 Rabbit Polyclonal antibody. Positive IHC detected in human ovary tumor tissue. Positive IP detected in mouse testis tissue. Positive WB detected in human skeletal muscle tissue. Observed molecular weight by Western-blot: 84 kDa

## Preparation

This antibody was obtained by immunization of OSBPL11 recombinant protein (Accession Number: BC010422). Purification method: Antigen affinity purified.

## Formulation

PBS with 0.1% sodium azide and 50% glycerol pH 7.3.

## Storage

Store at -20°C. DO NOT ALIQUOT

## Clonality

Polyclonal

## Ig Type

Rabbit IgG

## Applications

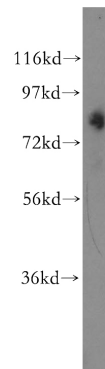
ELISA, WB, IHC, IP

## Dilutions

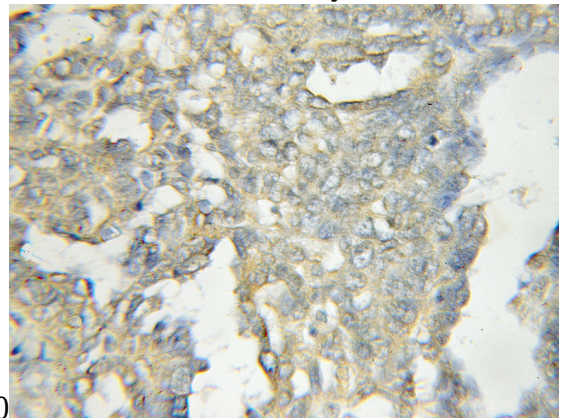
Recommended Dilution:

WB: 1:200-1:2000

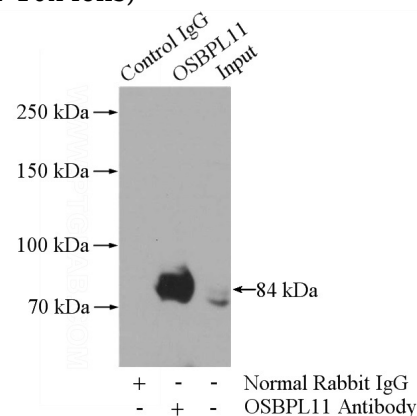
## Validations



human skeletal muscle tissue were subjected to SDS PAGE followed by western blot with Catalog No:113430(OSBPL11 antibody) at dilution of



Immunohistochemical of paraffin-embedded human ovary tumor using Catalog No:113430(OSBPL11 antibody) at dilution of 1:50 (under 10x lens)



# OSBPL11 antibody



Catalog Number: 113430

---

IP Result of anti-OSBPL11 (IP:Catalog No:113430, 4ug; Detection:Catalog No:113430 1:300) with mouse testis tissue lysate 4000ug.