

NUAK2 antibody



Catalog Number: 113402

Product name

NUAK2 antibody

IHC: 1:20-1:200

IF: 1:20-1:200

Specificity

Human, Mouse, Rat; other species not tested.

Antibody description

NUAK2 Rabbit Polyclonal antibody. Positive IHC detected in human kidney tissue, human renal cell carcinoma tissue. Positive IF detected in NIH3T3 cells. Positive WB detected in Y79 cells, HeLa cells. Observed molecular weight by Western-blot: 70 kDa

Preparation

This antibody was obtained by immunization of NUAK2 recombinant protein (Accession Number: NM_030952). Purification method: Antigen affinity purified.

Formulation

PBS with 0.1% sodium azide and 50% glycerol pH 7.3.

Storage

Store at -20°C. DO NOT ALIQUOT

Clonality

Polyclonal

Ig Type

Rabbit IgG

Applications

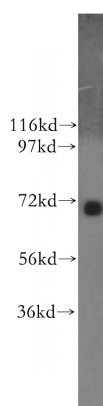
ELISA, WB, IHC, IF

Dilutions

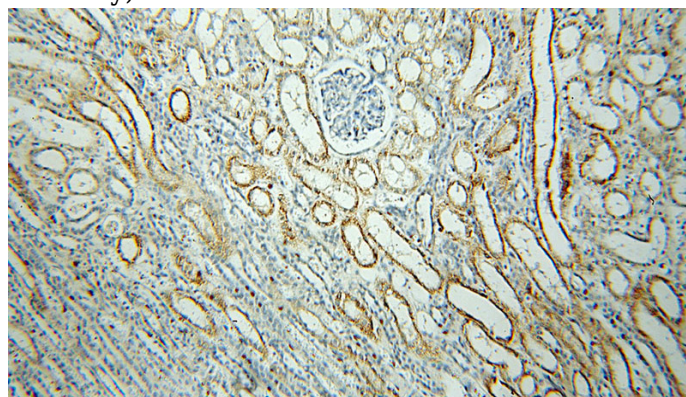
Recommended Dilution:

WB: 1:200-1:2000

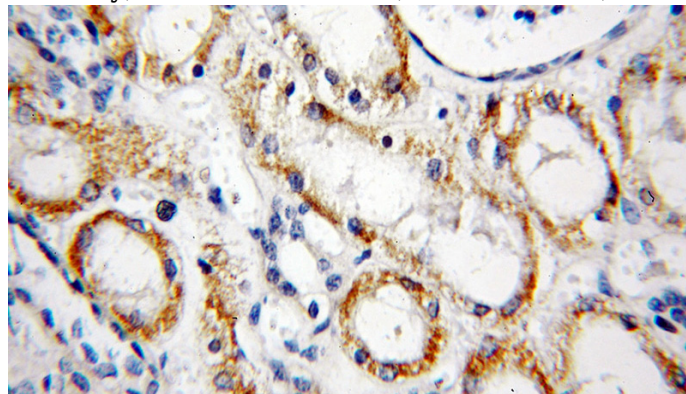
Validations



Y79 cells were subjected to SDS PAGE followed by western blot with Catalog No:113402(NUAK2 antibody) at dilution of 1:400



Immunohistochemical of paraffin-embedded human kidney using Catalog No:113402(NUAK2 antibody) at dilution of 1:50 (under 10x lens)



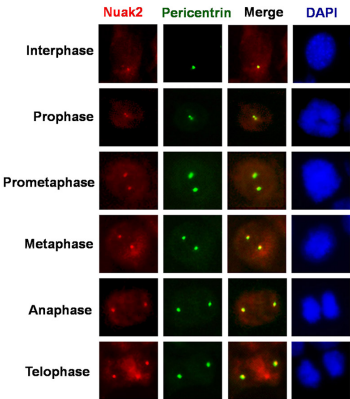
Immunohistochemical of paraffin-embedded human kidney using Catalog No:113402(NUAK2

NUAK2 antibody



Catalog Number: 113402

antibody) at dilution of 1:50 (under 40x lens)



NIH3T3 cells on cover slips fixed and staining with anti-NUAK2 (Catalog No:113402,1:100;Rabbit polyclonal -Red) and anti-pericentrin(centrosome Marker; McAb-Green). The photo shows the centrosome in cell cycle: Interphase, Prophase, Prometaphase, Metaphase, Anaphase and Telophase. DAPI was used to stain the cell nuclei (blue) at a concentration of 1ug/ml.(from Dr. Zineldeen Doaa Hussein)