

NTF2 antibody

Catalog Number: 113398

Product name

NTF2 antibody

IHC: 1:20-1:200

IF: 1:10-1:100

Specificity

Human, Mouse, Rat; other species not tested.

Antibody description

NTF2 Rabbit Polyclonal antibody. Positive WB detected in K-562 cells, HeLa cells. Positive IHC detected in human ovary tumor tissue. Positive IF detected in MCF-7 cells. Observed molecular weight by Western-blot: 14kd

Preparation

This antibody was obtained by immunization of NTF2 recombinant protein (Accession Number: NM_001322040). Purification method: Antigen affinity purified.

Formulation

PBS with 0.02% sodium azide and 50% glycerol pH 7.3.

Storage

Store at -20°C. DO NOT ALIQUOT

Clonality

Polyclonal

Ig Type

Rabbit IgG

Applications

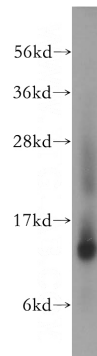
ELISA, WB, IHC, IF

Dilutions

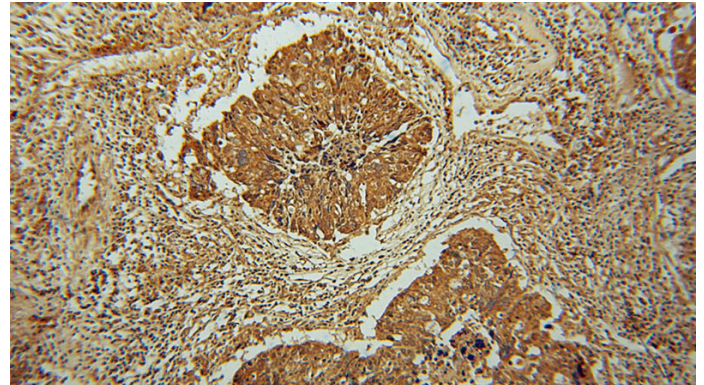
Recommended Dilution:

WB: 1:500-1:5000

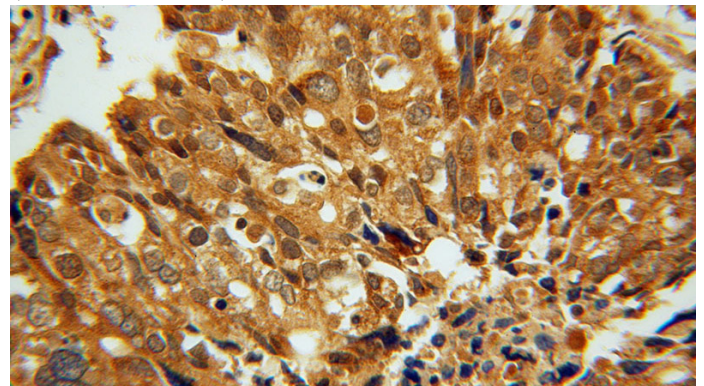
Validations



K-562 cells were subjected to SDS PAGE followed by western blot with Catalog No:113398(NUTF2 antibody) at dilution of 1:500



Immunohistochemical of paraffin-embedded human ovary tumor using Catalog No:113398(NUTF2 antibody) at dilution of 1:100 (under 10x lens)

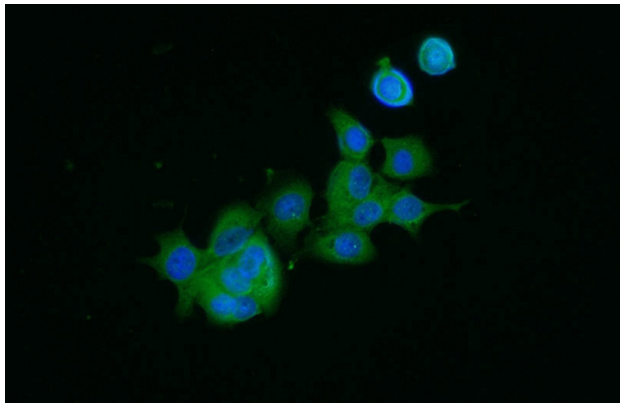


Immunohistochemical of paraffin-embedded

NTF2 antibody

Catalog Number: 113398

human ovary tumor using Catalog
No:113398(NUTF2 antibody) at dilution of 1:100
(under 40x lens)



Immunofluorescent analysis of MCF-7 cells using
Catalog No:113398(NUTF2 Antibody) at dilution
of 1:25 and Alexa Fluor 488-conjugated AffiniPure
Goat Anti-Rabbit IgG(H+L)