

ONECUT2 antibody



Catalog Number: 113350

Product name

ONECUT2 antibody

Specificity

Human, Mouse; other species not tested.

Antibody description

ONECUT2 Rabbit Polyclonal antibody. Positive WB detected in mouse skin tissue, A549 cells, HEK-293 cells, HeLa cells, HepG2 cells, Jurkat cells. Positive IP detected in HEK-293 cells. Observed molecular weight by Western-blot: 55-60 kDa

Preparation

This antibody was obtained by immunization of ONECUT2 recombinant protein (Accession Number: BC108925). Purification method: Antigen affinity purified.

Formulation

PBS with 0.02% sodium azide and 50% glycerol pH 7.3.

Storage

Store at -20°C. DO NOT ALIQUOT

Clonality

Polyclonal

Ig Type

Rabbit IgG

Applications

ELISA, WB, IP

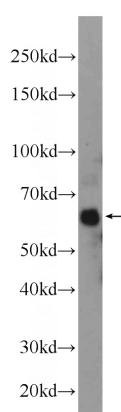
Dilutions

Recommended Dilution:

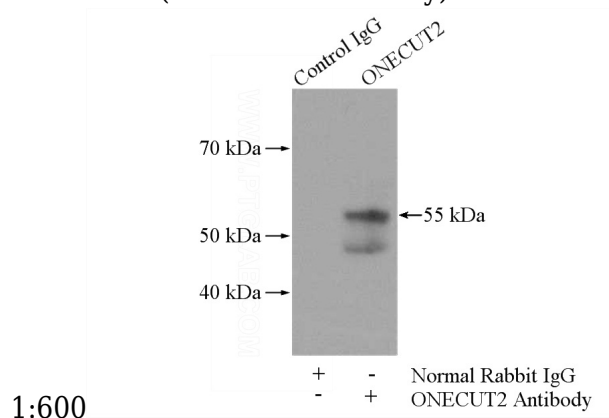
WB: 1:200-1:2000

IP: 1:200-1:1000

Validations



mouse skin tissue were subjected to SDS PAGE followed by western blot with Catalog No:113350(ONECUT2 Antibody) at dilution of



IP Result of anti-ONECUT2 (IP:Catalog No:113350, 4ug; Detection:Catalog No:113350 1:300) with HEK-293 cells lysate 3200ug.