

ONECUT1 antibody



Catalog Number: 113349

Product name

ONECUT1 antibody

Recommended Dilution:

WB: 1:200-1:2000

Immunogen

IHC: 1:20-1:200

[Human ONECUT1 Recombinant protein \(GST tag\)](#)

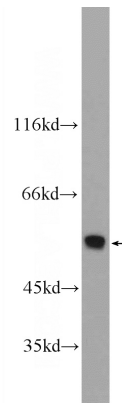
Validations

Specificity

Human, Mouse; other species not tested.

Antibody description

ONECUT1 Rabbit Polyclonal antibody. Positive IHC detected in human liver tissue, human liver cancer tissue. Positive WB detected in mouse liver tissue. Observed molecular weight by Western-blot: 51-55 kDa



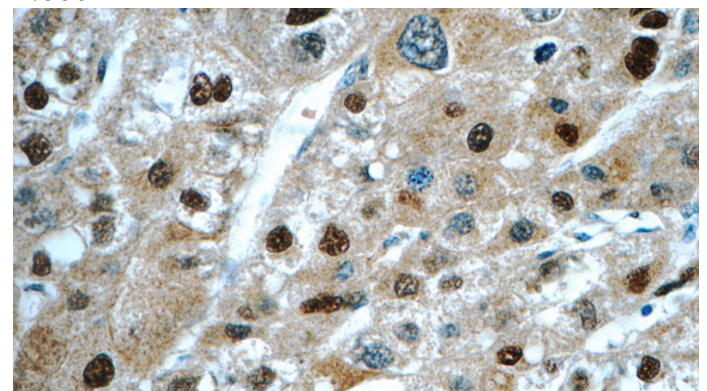
Preparation

This antibody was obtained by immunization of ONECUT1 recombinant protein (Accession Number: NM_004498). Purification method: Antigen affinity purified.

mouse liver tissue were subjected to SDS PAGE followed by western blot with Catalog No:113349(ONECUT1 Antibody) at dilution of 1:600

Formulation

PBS with 0.1% sodium azide and 50% glycerol pH 7.3.



Storage

Store at -20°C. DO NOT ALIQUOT

Clonality

Polyclonal

Immunohistochemistry of paraffin-embedded human liver cancer tissue slide using Catalog No:113349(ONECUT1 Antibody) at dilution of 1:50 (under 40x lens)

Ig Type

Rabbit IgG

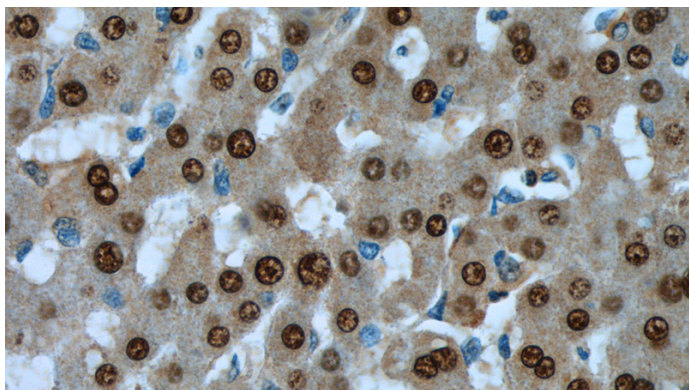
Applications

ELISA, WB, IHC

Dilutions

ONECUT1 antibody

Catalog Number: 113349



Immunohistochemistry of paraffin-embedded human liver tissue slide using Catalog No:113349(ONECUT1 Antibody) at dilution of 1:50 (under 40x lens)