

# OLIG2 antibody



Catalog Number: 113341

## Product name

OLIG2 antibody

IP: 1:200-1:2000

IHC: 1:20-1:200

## Specificity

Human, Mouse, Rat; other species not tested.

IF: 1:20-1:200

## Antibody description

OLIG2 Rabbit Polyclonal antibody. Positive IHC detected in human gliomas tissue. Positive IF detected in HepG2 cells. Positive WB detected in human brain tissue, mouse brain tissue. Positive IP detected in mouse brain tissue. Observed molecular weight by Western-blot: 32 kDa

## Preparation

This antibody was obtained by immunization of OLIG2 recombinant protein (Accession Number: XM\_005260908). Purification method: Antigen affinity purified.

## Formulation

PBS with 0.02% sodium azide and 50% glycerol pH 7.3.

## Storage

Store at -20°C. DO NOT ALIQUOT

## Clonality

Polyclonal

## Ig Type

Rabbit IgG

## Applications

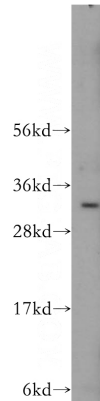
ELISA, WB, IHC, IF, IP

## Dilutions

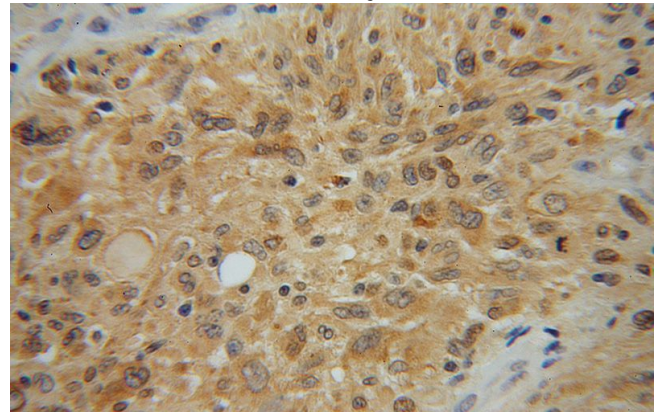
Recommended Dilution:

WB: 1:200-1:2000

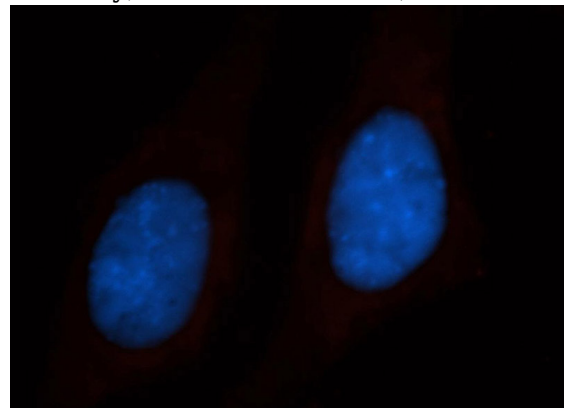
## Validations



human brain tissue were subjected to SDS PAGE followed by western blot with Catalog No:113341(OLIG2 antibody) at dilution of 1:400



Immunohistochemical of paraffin-embedded human gliomas using Catalog No:113341(OLIG2 antibody) at dilution of 1:50 (under 40x lens)

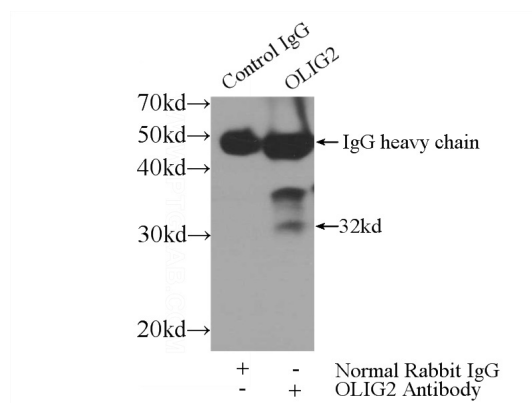


# OLIG2 antibody



Catalog Number: 113341

Immunofluorescent analysis of HepG2 cells, using Catalog No:113341 and Rhodamine-labeled goat anti-rabbit IgG (red). Blue pseudocolor = DAPI (fluorescent DNA dye).



IP Result of anti-OLIG2 (IP:Catalog No:113341, 3ug; Detection:Catalog No:113341 1:500) with mouse brain tissue lysate 4000ug.