

OGDH antibody



Catalog Number: 113331

Product name

OGDH antibody

Recommended Dilution:

WB: 1:1000-1:10000

Specificity

Human, Mouse, Rat; other species not tested.

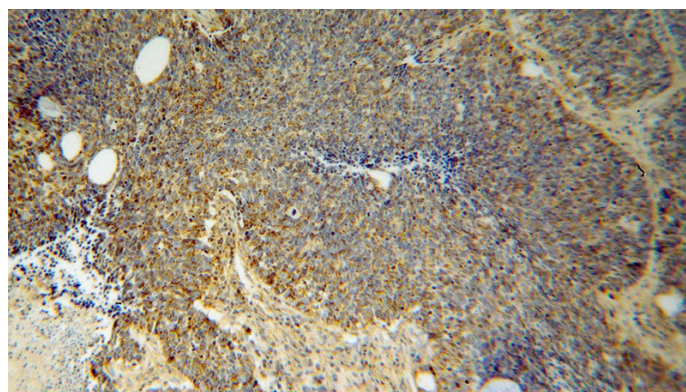
IHC: 1:20-1:200

IF: 1:10-1:100

Antibody description

OGDH Rabbit Polyclonal antibody. Positive IF detected in Hela cells. Positive IHC detected in human lung cancer tissue. Positive WB detected in mouse lung tissue, A549 cells, mouse heart tissue, mouse liver tissue, mouse pancreas tissue, rat heart tissue, rat lung tissue, ROS1728 cells. Observed molecular weight by Western-blot: 116kd

Validations



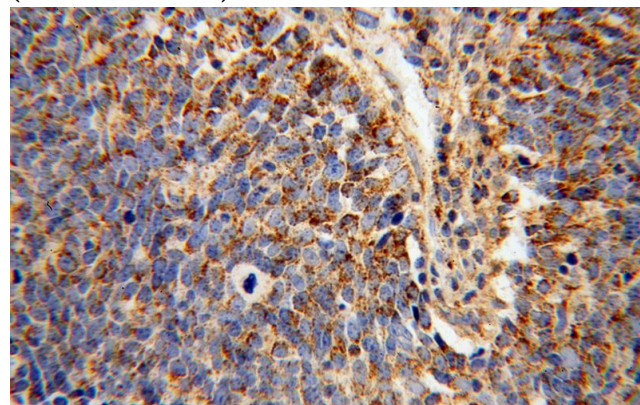
Preparation

This antibody was obtained by immunization of OGDH recombinant protein (Accession Number: NM_002541). Purification method: Antigen affinity purified.

Immunohistochemical of paraffin-embedded human lung cancer using Catalog No:113331(OGDH antibody) at dilution of 1:100 (under 10x lens)

Formulation

PBS with 0.02% sodium azide and 50% glycerol pH 7.3.



Storage

Store at -20°C. DO NOT ALIQUOT

Immunohistochemical of paraffin-embedded human lung cancer using Catalog No:113331(OGDH antibody) at dilution of 1:100 (under 40x lens)

Clonality

Polyclonal

Ig Type

Rabbit IgG

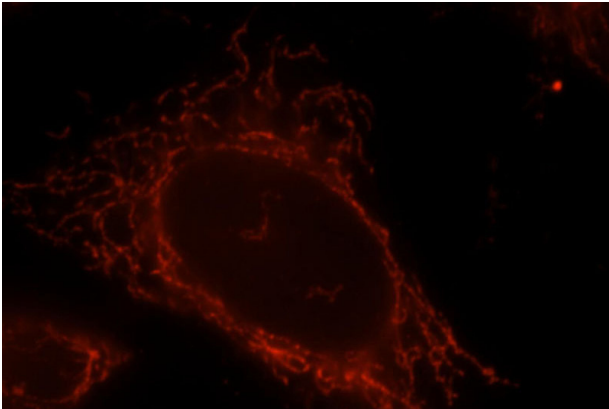
Applications

ELISA, IHC, IF, WB

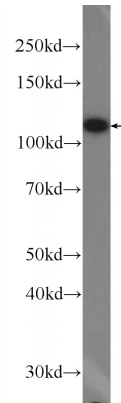
Dilutions

OGDH antibody

Catalog Number: 113331



Immunofluorescent analysis of HeLa cells, using OGDH antibody Catalog No:113331 at 1:25 dilution and Rhodamine-labeled goat anti-rabbit



IgG (red).

mouse lung tissue were subjected to SDS PAGE followed by western blot with Catalog No:113331(OGDH Antibody) at dilution of 1:3000