

ODF2 antibody

Catalog Number: 113325

Product name

ODF2 antibody

IP: 1:200-1:2000

IHC: 1:20-1:200

Specificity

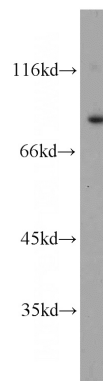
Human, Mouse, Rat; other species not tested.

IF: 1:10-1:100

Antibody description

ODF2 Rabbit Polyclonal antibody. Positive IHC detected in human breast cancer tissue. Positive IF detected in HeLa cells. Positive IP detected in mouse testis tissue. Positive WB detected in mouse testis tissue, mouse lung tissue. Observed molecular weight by Western-blot: 67-100 kDa

Validations



Preparation

This antibody was obtained by immunization of ODF2 recombinant protein (Accession Number: BC010629). Purification method: Antigen affinity purified.

mouse testis tissue were subjected to SDS PAGE followed by western blot with Catalog No:113325(ODF2 antibody) at dilution of 1:500

Formulation

PBS with 0.1% sodium azide and 50% glycerol pH 7.3.

Storage

Store at -20°C. DO NOT ALIQUOT

Clonality

Polyclonal

Ig Type

Rabbit IgG

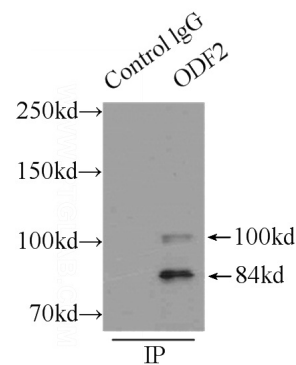
Applications

ELISA, WB, IHC, IP, IF

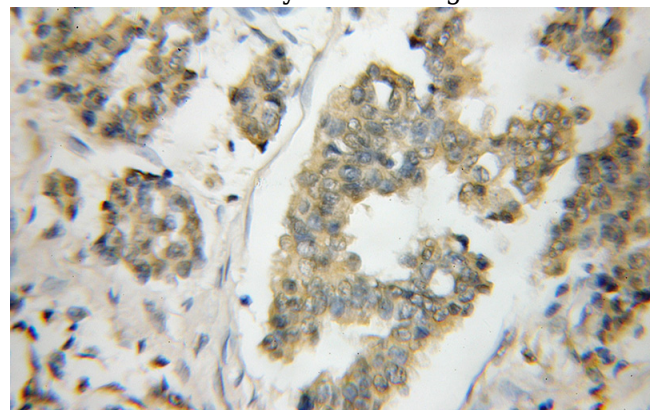
Dilutions

Recommended Dilution:

WB: 1:200-1:2000



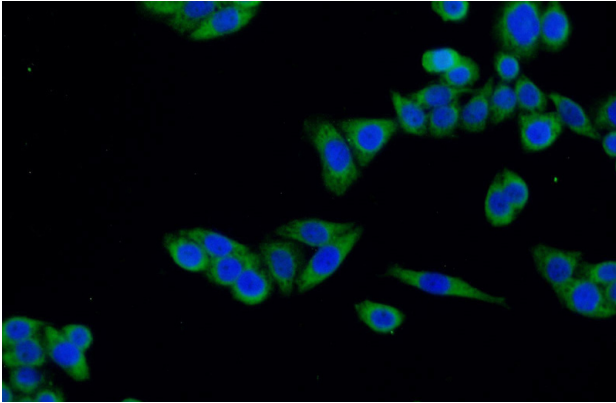
IP Result of anti-ODF2 (IP:Catalog No:113325, 5ug; Detection:Catalog No:113325 1:500) with mouse testis tissue lysate 8000ug.



ODF2 antibody

Catalog Number: 113325

Immunohistochemical of paraffin-embedded human breast cancer using Catalog No:113325(ODF2 antibody) at dilution of 1:50 (under 10x lens)



Immunofluorescent analysis of HeLa cells using Catalog No:113325(ODF2 Antibody) at dilution of 1:25 and Alexa Fluor 488-conjugated AffiniPure Goat Anti-Rabbit IgG(H+L)