

ODC1 antibody

Catalog Number: 113323

Product name

ODC1 antibody

Specificity

Human; other species not tested.

Antibody description

ODC1 Rabbit Polyclonal antibody. Positive WB detected in RAW264.7 cells. Positive IHC detected in human prostate hyperplasia tissue, human prostate cancer tissue.

Preparation

This antibody was obtained by immunization of ODC1 recombinant protein (Accession Number: NM_001287189). Purification method: Antigen affinity purified.

Formulation

PBS with 0.02% sodium azide and 50% glycerol pH 7.3.

Storage

Store at -20°C. DO NOT ALIQUOT

Clonality

Polyclonal

Ig Type

Rabbit IgG

Applications

ELISA, WB, IHC

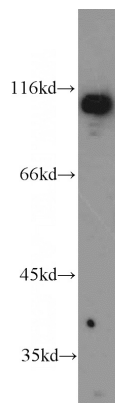
Dilutions

Recommended Dilution:

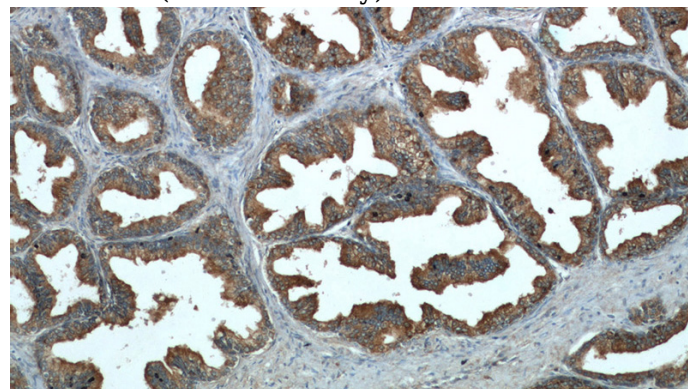
WB: 1:500-1:5000

IHC: 1:20-1:200

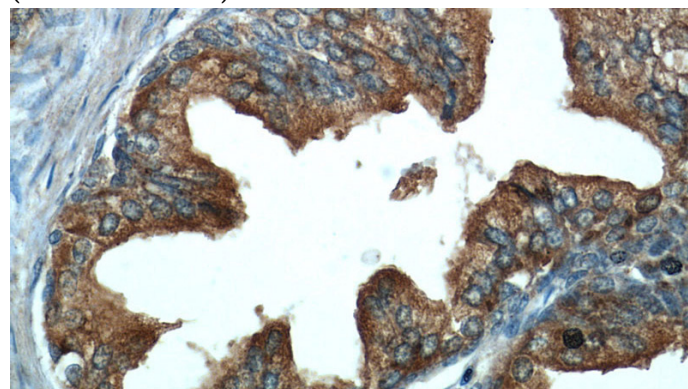
Validations



RAW264.7 cells were subjected to SDS PAGE followed by western blot with Catalog No:113323(ODC1 antibody) at dilution of 1:1000



Immunohistochemical of paraffin-embedded human prostate hyperplasia using Catalog No:113323(ODC1 antibody) at dilution of 1:50 (under 10x lens)



Immunohistochemical of paraffin-embedded human prostate hyperplasia using Catalog No:113323(ODC1 antibody) at dilution of 1:50 (under 40x lens)