

ODC1 antibody

Catalog Number: 113322

Product name

ODC1 antibody

WB: 1:200-1:1000

IHC: 1:20-1:200

Specificity

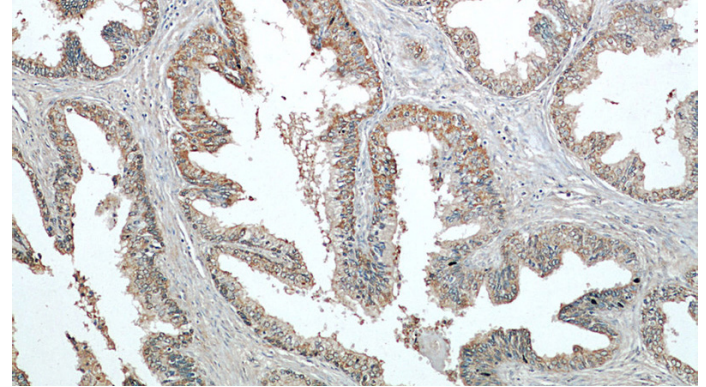
Human, Mouse, Rat; other species not tested.

IF: 1:10-1:100

Antibody description

ODC1 Rabbit Polyclonal antibody. Positive IF detected in HepG2 cells. Positive IHC detected in human prostate hyperplasia tissue, human placenta tissue, human prostate cancer tissue. Positive WB detected in mouse thymus tissue. Observed molecular weight by Western-blot: 53 kDa

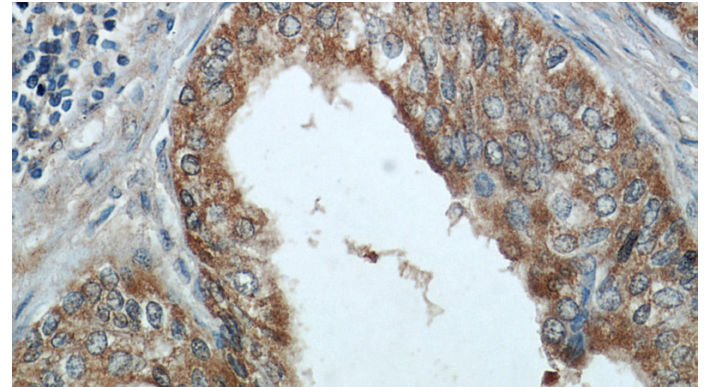
Validations



Immunohistochemical of paraffin-embedded human prostate hyperplasia using Catalog No:113322(ODC1 antibody) at dilution of 1:50 (under 10x lens)

Preparation

This antibody was obtained by immunization of ODC1 recombinant protein (Accession Number: NM_001287189). Purification method: Antigen affinity purified.



Immunohistochemical of paraffin-embedded human prostate hyperplasia using Catalog No:113322(ODC1 antibody) at dilution of 1:50 (under 40x lens)

Formulation

PBS with 0.02% sodium azide and 50% glycerol pH 7.3.

Storage

Store at -20°C. DO NOT ALIQUOT

Clonality

Polyclonal

Ig Type

Rabbit IgG

Applications

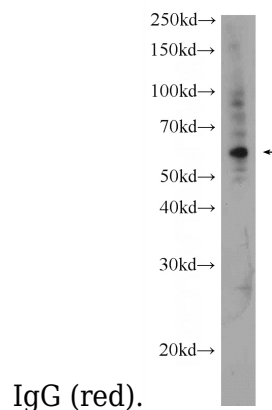
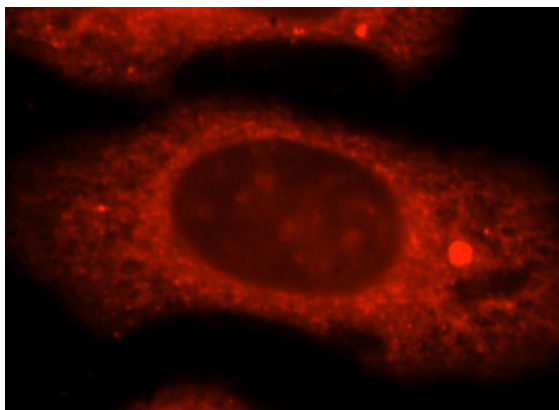
ELISA, IF, IHC, WB

Dilutions

Recommended Dilution:

ODC1 antibody

Catalog Number: 113322



IgG (red).

Immunofluorescent analysis of HepG2 cells, using ODC1 antibody Catalog No:113322 at 1:25 dilution and Rhodamine-labeled goat anti-rabbit

mouse thymus tissue were subjected to SDS PAGE followed by western blot with Catalog No:113322(ODC1 Antibody) at dilution of 1:300