

# NOTCH1 antibody

Catalog Number: 113308

## Product name

NOTCH1 antibody

WB: 1:200-1:2000

IP: 1:200-1:1000

## Specificity

Human, Mouse, Rat, Zebrafish; other species not tested.

IHC: 1:50-1:500

## Antibody description

NOTCH1 Rabbit Polyclonal antibody. Positive IP detected in HepG2 cells. Positive WB detected in HepG2 cells, HeLa cells. Positive IHC detected in human kidney tissue, human lung tissue, human ovary tumor tissue, human spleen tissue, mouse brain tissue, mouse liver tissue. Observed molecular weight by Western-blot: 270-300 kDa

## Validations



## Preparation

This antibody was obtained by immunization of Peptide (Accession Number: NM\_017617). Purification method: Antigen affinity purified.

HepG2 cells were subjected to SDS PAGE followed by western blot with Catalog No:113308(NOTCH1 antibody) at dilution of 1:500

## Formulation

PBS with 0.02% sodium azide and 50% glycerol pH 7.3.

## Storage

Store at -20°C. DO NOT ALIQUOT

## Clonality

Polyclonal

## Ig Type

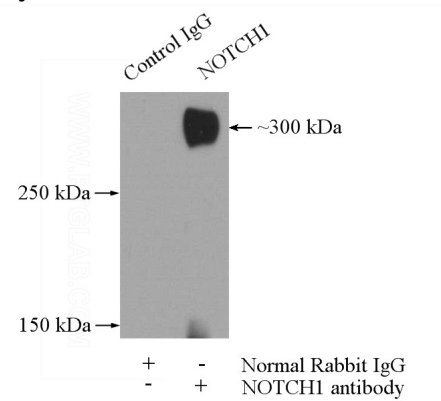
Rabbit IgG

## Applications

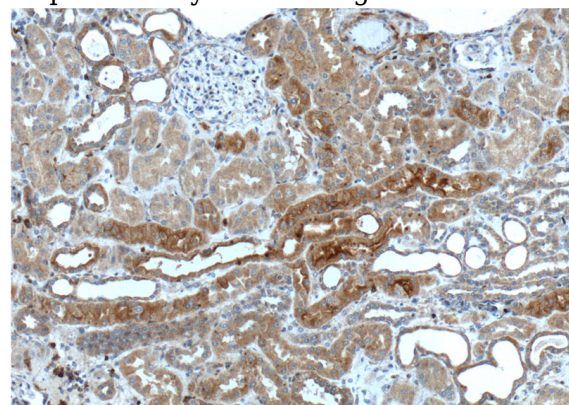
ELISA, WB, IP, IHC

## Dilutions

Recommended Dilution:



IP Result of anti-NOTCH1 (IP:Catalog No:113308, 5ug; Detection:Catalog No:113308 1:200) with HepG2 cells lysate 2400ug.

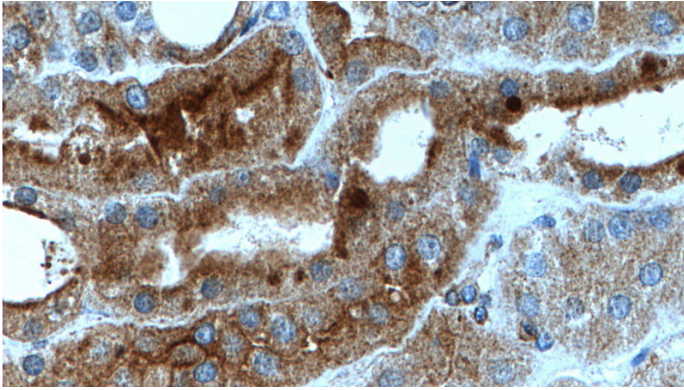


# NOTCH1 antibody

Catalog Number: 113308

---

Immunohistochemistry of paraffin-embedded human kidney tissue slide using Catalog No:113308(NOTCH1 Antibody) at dilution of 1:200 (under 10x lens).



Immunohistochemistry of paraffin-embedded human kidney tissue slide using Catalog No:113308(NOTCH1 Antibody) at dilution of 1:200 (under 40x lens).