

NSFL1C antibody



Catalog Number: 113289

Product name

NSFL1C antibody

Immunogen

[Human NSFL1C Recombinant protein \(His tag\)](#)

Specificity

Human, Mouse; other species not tested.

Antibody description

NSFL1C Rabbit Polyclonal antibody. Positive WB detected in A431 cells, HEK-293 cells, mouse liver tissue. Positive IHC detected in human lung cancer tissue, human liver cancer tissue. Observed molecular weight by Western-blot: 47 kDa

Preparation

This antibody was obtained by immunization of NSFL1C recombinant protein (Accession Number: NM_016143). Purification method: Antigen affinity purified.

Formulation

PBS with 0.1% sodium azide and 50% glycerol pH 7.3.

Storage

Store at -20°C. DO NOT ALIQUOT

Clonality

Polyclonal

Ig Type

Rabbit IgG

Applications

ELISA, WB, IHC

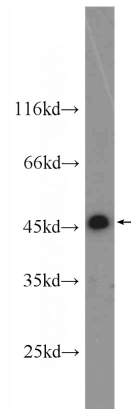
Dilutions

Recommended Dilution:

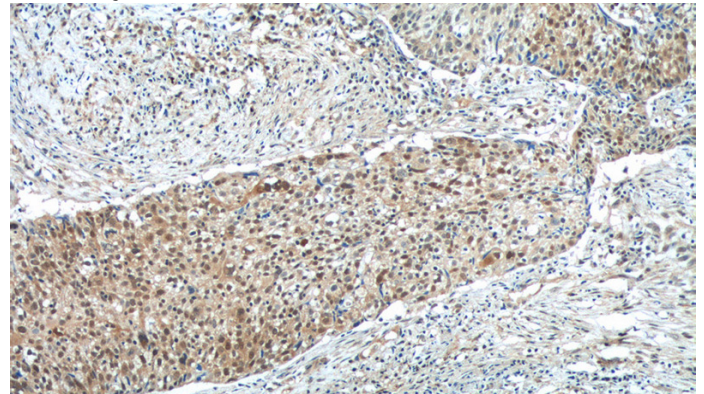
WB: 1:200-1:2000

IHC: 1:50-1:500

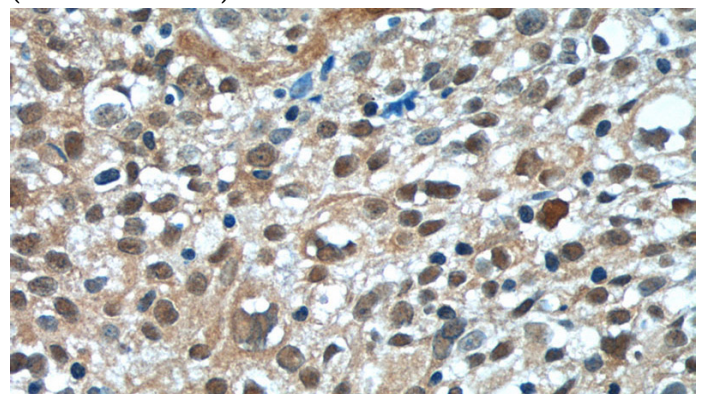
Validations



A431 cells were subjected to SDS PAGE followed by western blot with Catalog No:113289(NSFL1C antibody) at dilution of 1:800



Immunohistochemistry of paraffin-embedded human lung cancer tissue slide using Catalog No:113289(NSFL1C Antibody) at dilution of 1:50 (under 10x lens)



NSFL1C antibody



Catalog Number: 113289

Immunohistochemistry of paraffin-embedded human lung cancer tissue slide using Catalog

No:113289(NSFL1C Antibody) at dilution of 1:50 (under 40x lens)