

NRG1 antibody

Catalog Number: 113278

Product name

NRG1 antibody

WB: 1:200-1:2000

IP: 1:500-1:5000

Specificity

Human, Mouse; other species not tested.

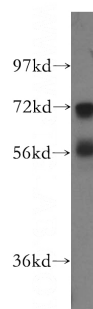
IHC: 1:20-1:200

IF: 1:10-1:100

Antibody description

NRG1 Rabbit Polyclonal antibody. Positive WB detected in human liver tissue, mouse liver tissue, SH-SY5Y cells. Positive IP detected in mouse liver tissue. Positive IHC detected in human breast cancer tissue. Positive IF detected in HepG2 cells. Observed molecular weight by Western-blot: 55 kDa and 72 kDa

Validations



Preparation

This antibody was obtained by immunization of NRG1 recombinant protein (Accession Number: NM_013959). Purification method: Antigen affinity purified.

human liver tissue were subjected to SDS PAGE followed by western blot with Catalog No:113278(NRG1 antibody) at dilution of 1:250

Formulation

PBS with 0.1% sodium azide and 50% glycerol pH 7.3.

Storage

Store at -20°C. DO NOT ALIQUOT

Clonality

Polyclonal

Ig Type

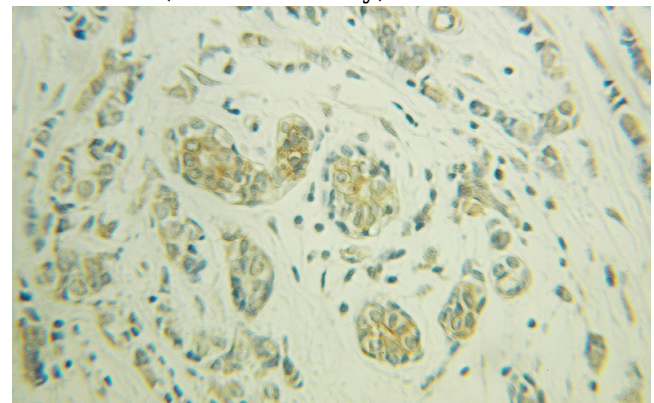
Rabbit IgG

Applications

ELISA, WB, IHC, IF, IP

Dilutions

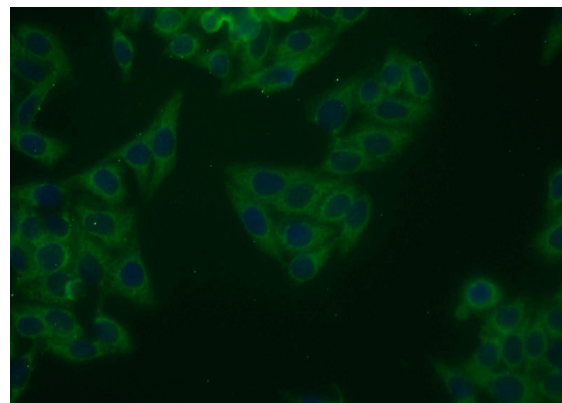
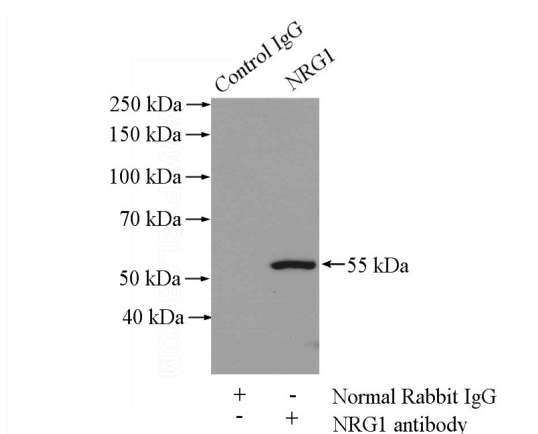
Recommended Dilution:



Immunohistochemical of paraffin-embedded human breast cancer using Catalog No:113278(NRG1 antibody) at dilution of 1:100 (under 25x lens)

NRG1 antibody

Catalog Number: 113278



Immunofluorescent analysis of HepG2 cells using Catalog No:113278(NRG1 Antibody) at dilution of 1:25 and Alexa Fluor 488-conjugated AffiniPure Goat Anti-Rabbit IgG(H+L)

IP Result of anti-NRG1 (IP:Catalog No:113278, 4ug; Detection:Catalog No:113278 1:1000) with mouse liver tissue lysate 4000ug.