

NRBF2 antibody

Catalog Number: 113272

Product name

NRBF2 antibody

IHC: 1:20-1:200

IF: 1:20-1:200

Specificity

Human; other species not tested.

Antibody description

NRBF2 Rabbit Polyclonal antibody. Positive IF detected in HepG2 cells. Positive IHC detected in human tonsillitis tissue, human liver cancer tissue, human placenta tissue. Positive WB detected in HeLa cells, HEK-293 cells. Observed molecular weight by Western-blot: 35-37 kDa

Preparation

This antibody was obtained by immunization of NRBF2 recombinant protein (Accession Number: BC001345). Purification method: Antigen affinity purified.

Formulation

PBS with 0.1% sodium azide and 50% glycerol pH 7.3.

Storage

Store at -20°C. DO NOT ALIQUOT

Clonality

Polyclonal

Ig Type

Rabbit IgG

Applications

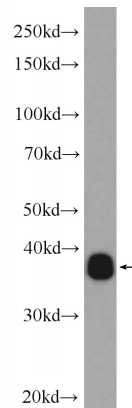
ELISA, WB, IHC, IF

Dilutions

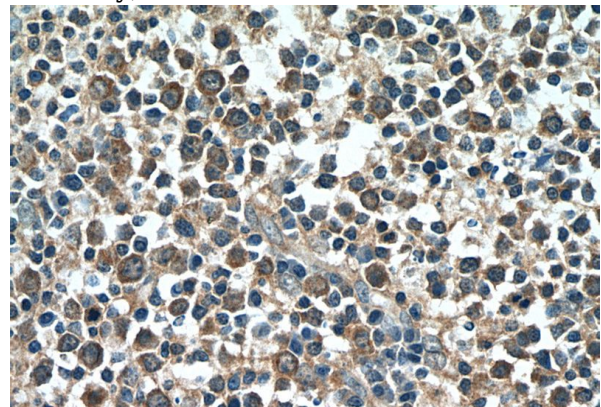
Recommended Dilution:

WB: 1:500-1:5000

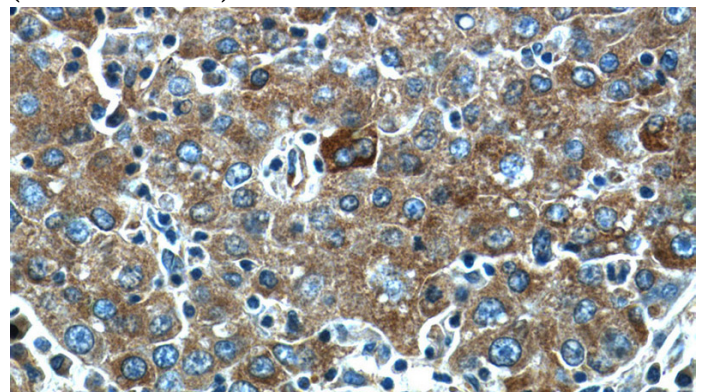
Validations



HeLa cells were subjected to SDS PAGE followed by western blot with Catalog No:113272(NRBF2 Antibody) at dilution of 1:1000



Immunohistochemistry of paraffin-embedded human tonsillitis tissue slide using Catalog No:113272(NRBF2 Antibody) at dilution of 1:50 (under 40x lens)

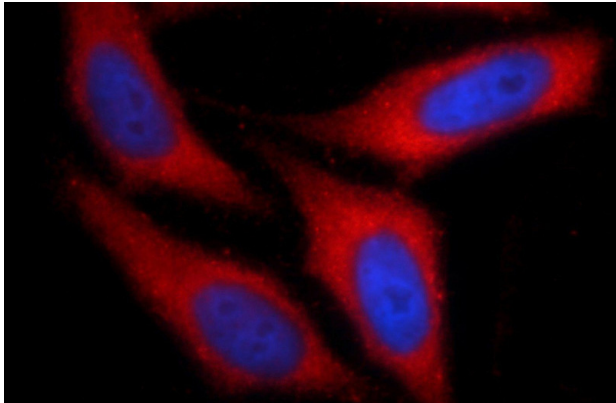


Immunohistochemistry of paraffin-embedded

NRBF2 antibody

Catalog Number: 113272

human liver cancer tissue slide using Catalog No:113272(NRBF2 Antibody) at dilution of 1:50 (under 40x lens)



Immunofluorescent analysis of HepG2 cells using Catalog No:113272(NRBF2 Antibody) at dilution of 1:50 and Rhodamine-Goat anti-Rabbit IgG