

NR2F1 antibody

Catalog Number: 113267

Product name

NR2F1 antibody

Specificity

Human, Mouse; other species not tested.

Antibody description

NR2F1 Rabbit Polyclonal antibody. Positive IHC detected in human ovary tissue. Positive WB detected in human placenta tissue, NIH/3T3 cells. Observed molecular weight by Western-blot: 50-55 kDa

Preparation

This antibody was obtained by immunization of NR2F1 recombinant protein (Accession Number: NM_005654). Purification method: Antigen affinity purified.

Formulation

PBS with 0.1% sodium azide and 50% glycerol pH 7.3.

Storage

Store at -20°C. DO NOT ALIQUOT

Clonality

Polyclonal

Ig Type

Rabbit IgG

Applications

ELISA, WB, IHC

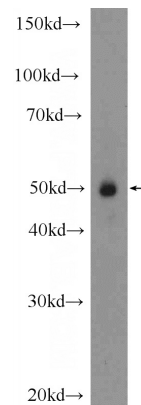
Dilutions

Recommended Dilution:

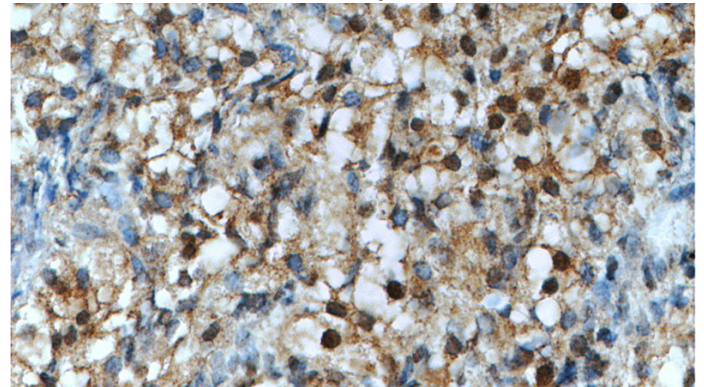
WB: 1:200-1:2000

IHC: 1:20-1:200

Validations



human placenta tissue were subjected to SDS PAGE followed by western blot with Catalog No:113267(NR2F1 Antibody) at dilution of 1:600



Immunohistochemistry of paraffin-embedded human ovary tissue slide using Catalog No:113267(NR2F1 Antibody) at dilution of 1:50 (under 40x lens)