

NR2E3 antibody



Catalog Number: 113266

Product name

NR2E3 antibody

Specificity

Human, Mouse, Rat; other species not tested.

Antibody description

NR2E3 Rabbit Polyclonal antibody. Positive WB detected in Y79 cells, HepG2 cells, mouse eye tissue. Positive FC detected in photoreceptor progenitor cells. Positive IF detected in photoreceptor progenitor cells. Positive IHC detected in human prostate cancer tissue. Observed molecular weight by Western-blot: 43-45 kDa

Preparation

This antibody was obtained by immunization of NR2E3 recombinant protein (Accession Number: NM_001281446). Purification method: Antigen affinity purified.

Formulation

PBS with 0.02% sodium azide and 50% glycerol pH 7.3.

Storage

Store at -20°C. DO NOT ALIQUOT

Clonality

Polyclonal

Ig Type

Rabbit IgG

Applications

ELISA, WB, IHC, IF, FC

Dilutions

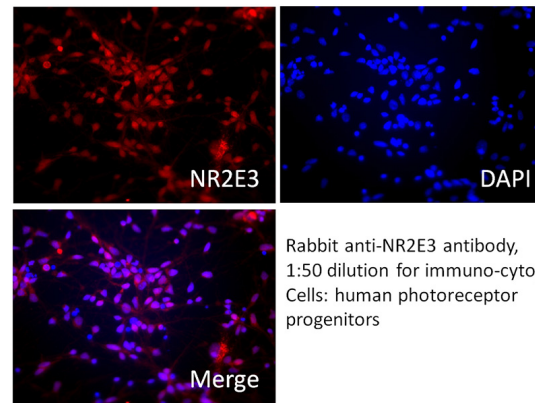
Recommended Dilution:

WB: 1:500-1:5000

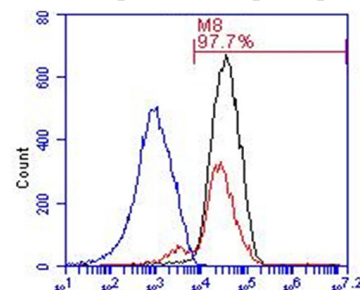
IHC: 1:20-1:200

IF: N/A

Validations

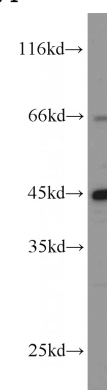


IF result of NR2E3 antibody (Catalog No:113266, 1:50) with human photoreceptor progenitors cells.



Rabbit anti-NR2E3 antibody, 1:100 dilution for FACS, Cells: human photoreceptor progenitors, Blue, isotype control; Black=passage 2; Red=passage 4.

FC result of NR2E3 antibody (Catalog No:113266, 1:100) with human photoreceptor progenitors cells. Blue, isotype control; Black=passage 2;

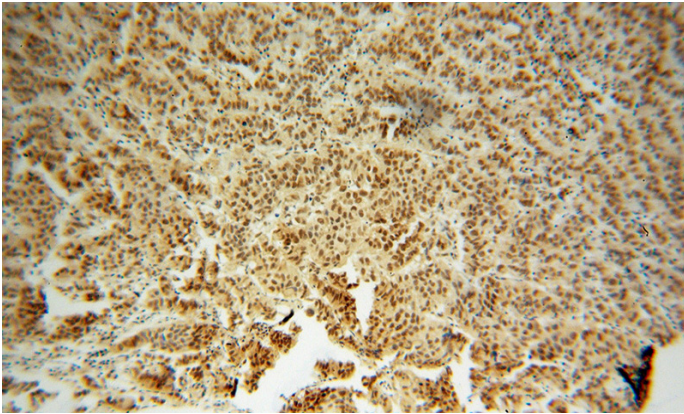


Red=passage 4.

NR2E3 antibody

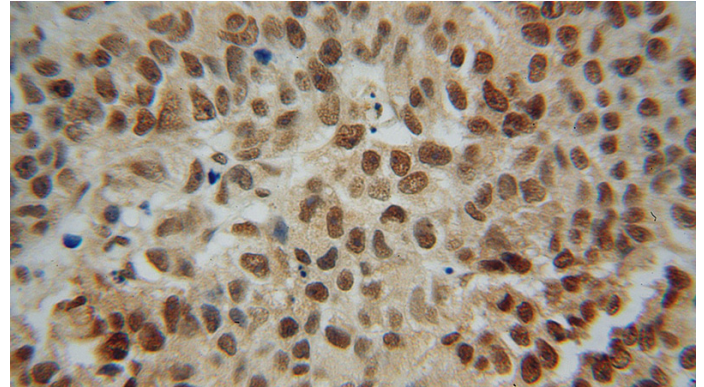
Catalog Number: 113266

Y79 cells were subjected to SDS PAGE followed by western blot with Catalog No:113266(NR2E3 antibody) at dilution of 1:1000



Immunohistochemical of paraffin-embedded human prostate cancer using Catalog

No:113266(NR2E3 antibody) at dilution of 1:100 (under 10x lens)



Immunohistochemical of paraffin-embedded human prostate cancer using Catalog No:113266(NR2E3 antibody) at dilution of 1:100 (under 40x lens)