

NMT1 antibody

Catalog Number: 113255

Product name

NMT1 antibody

Specificity

Human, Mouse, Rat; other species not tested.

Antibody description

NMT1 Rabbit Polyclonal antibody. Positive WB detected in SKOV-3 cells, HeLa cells, human kidney tissue, L02 cells, mouse pancreas tissue, PC-3 cells. Positive IP detected in HeLa cells. Positive IHC detected in human gliomas tissue, human heart tissue, human kidney tissue. Positive IF detected in MCF-7 cells. Observed molecular weight by Western-blot: 49-68 kDa

Preparation

This antibody was obtained by immunization of NMT1 recombinant protein (Accession Number: NM_021079). Purification method: Antigen affinity purified.

Formulation

PBS with 0.1% sodium azide and 50% glycerol pH 7.3.

Storage

Store at -20°C. DO NOT ALIQUOT

Clonality

Polyclonal

Ig Type

Rabbit IgG

Applications

ELISA, IHC, IF, WB, IP

Dilutions

Recommended Dilution:

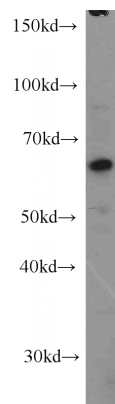
WB: 1:500-1:5000

IP: 1:200-1:2000

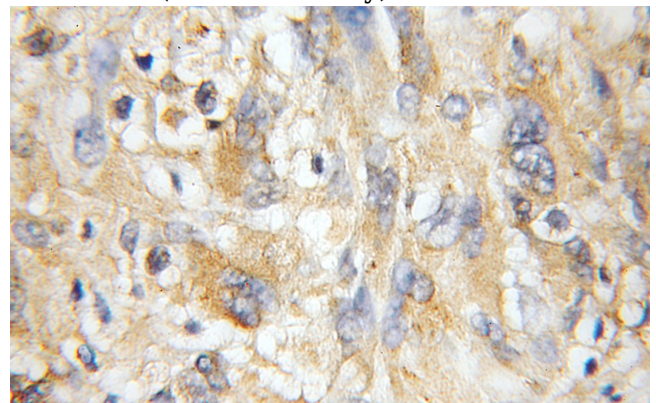
IHC: 1:20-1:200

IF: 1:20-1:200

Validations



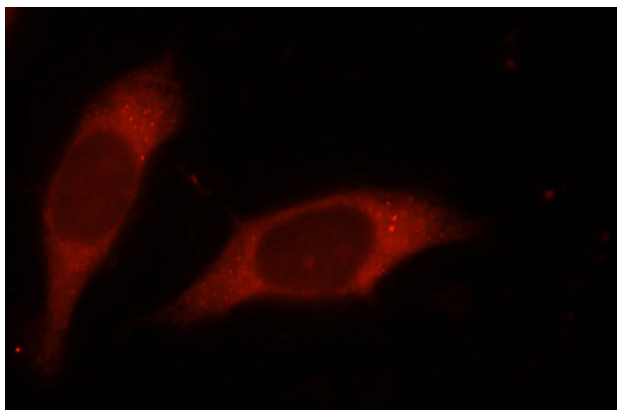
SKOV-3 cells were subjected to SDS PAGE followed by western blot with Catalog No:113255(NMT1 antibody) at dilution of 1:1000



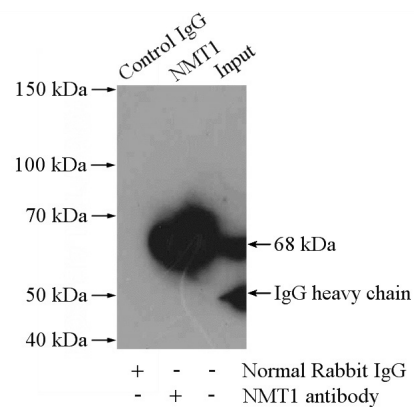
Immunohistochemical of paraffin-embedded human gliomas using Catalog No:113255(NMT1 antibody) at dilution of 1:50 (under 10x lens)

NMT1 antibody

Catalog Number: 113255



Immunofluorescent analysis of MCF-7 cells, using NMT1 antibody Catalog No:113255 at 1:50 dilution and Rhodamine-labeled goat anti-rabbit



IgG (red).

IP Result of anti-NMT1 (IP:Catalog No:113255, 4ug; Detection:Catalog No:113255 1:500) with HeLa cells lysate 2000ug.