

# NME5 antibody



Catalog Number: 113249

## Product name

NME5 antibody

## Immunogen

[Human NME5 Recombinant protein \(GST tag\)](#)

## Specificity

Human, Mouse, Rat; other species not tested.

## Antibody description

NME5 Rabbit Polyclonal antibody. Positive WB detected in mouse testis tissue, human brain tissue, human kidney tissue. Positive IHC detected in human prostate tissue. Observed molecular weight by Western-blot: 24kd

## Preparation

This antibody was obtained by immunization of NME5 recombinant protein (Accession Number: NM\_003551). Purification method: Antigen affinity purified.

## Formulation

PBS with 0.1% sodium azide and 50% glycerol pH 7.3.

## Storage

Store at -20°C. DO NOT ALIQUOT

## Clonality

Polyclonal

## Ig Type

Rabbit IgG

## Applications

ELISA, WB, IHC

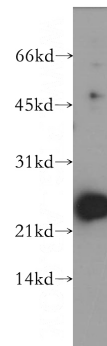
## Dilutions

Recommended Dilution:

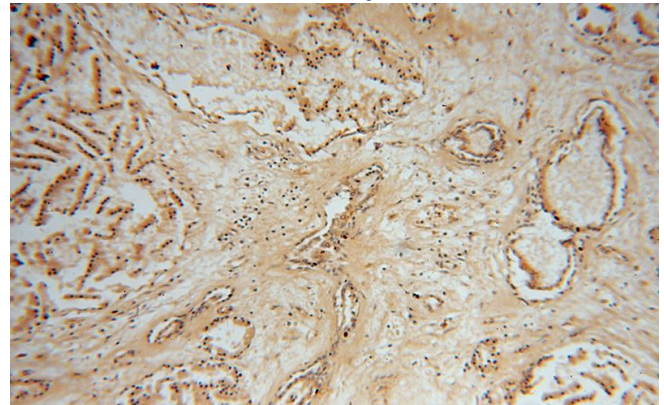
WB: 1:500-1:5000

IHC: 1:20-1:200

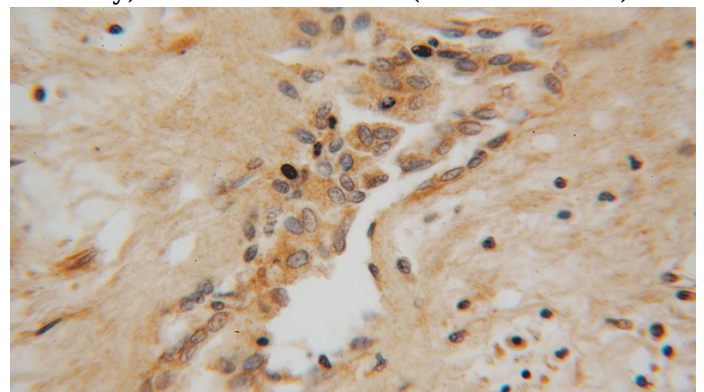
## Validations



mouse testis tissue were subjected to SDS PAGE followed by western blot with Catalog No:113249(NME5 antibody) at dilution of 1:500



Immunohistochemical of paraffin-embedded human prostate using Catalog No:113249(NME5 antibody) at dilution of 1:100 (under 10x lens)



# NME5 antibody



Catalog Number: 113249

---

Immunohistochemical of paraffin-embedded

human prostate using Catalog No:113249(NME5 antibody) at dilution of 1:100 (under 40x lens)