

# NPTX2 antibody

Catalog Number: 113225

## Product name

NPTX2 antibody

IP: 1:200-1:2000

IHC: 1:20-1:200

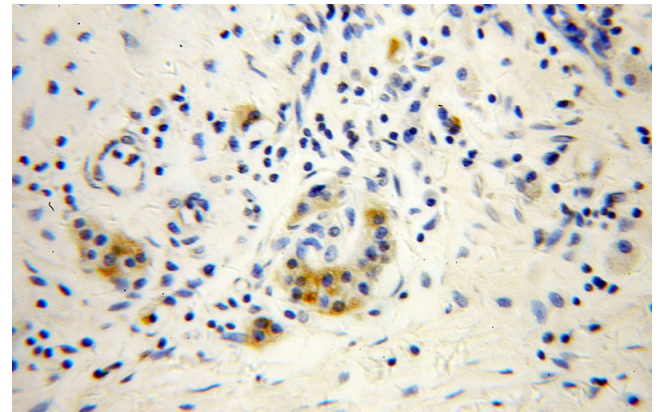
## Specificity

Human, Mouse, Rat; other species not tested.

## Validations

## Antibody description

NPTX2 Rabbit Polyclonal antibody. Positive IHC detected in human pancreas cancer tissue. Positive WB detected in mouse brain tissue, PC-3 cells, SH-SY5Y cells. Positive IP detected in mouse brain tissue. Observed molecular weight by Western-blot: 47 kDa



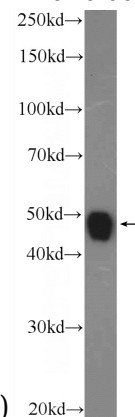
## Preparation

This antibody was obtained by immunization of NPTX2 recombinant protein (Accession Number: NM\_002523). Purification method: Antigen affinity purified.

Immunohistochemical of paraffin-embedded human pancreas cancer using Catalog No:113225(NPTX2 antibody) at dilution of 1:100

## Formulation

PBS with 0.1% sodium azide and 50% glycerol pH 7.3.



(under 40x lens)

## Storage

Store at -20°C. DO NOT ALIQUOT

mouse brain tissue were subjected to SDS PAGE followed by western blot with Catalog No:113225(NPTX2 Antibody) at dilution of 1:600

## Clonality

Polyclonal

## Ig Type

Rabbit IgG

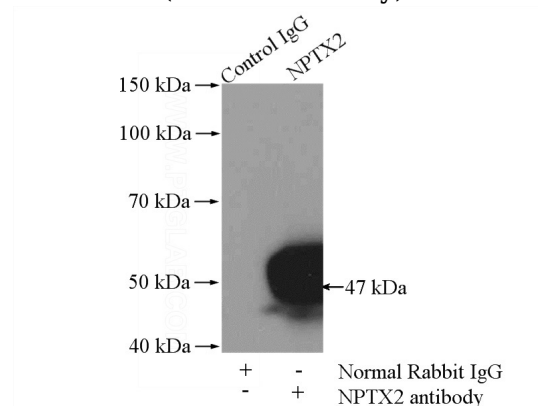
## Applications

ELISA, IHC, WB, IP

## Dilutions

Recommended Dilution:

WB: 1:200-1:2000



IP Result of anti-NPTX2 (IP:Catalog No:113225,

# NPTX2 antibody



Catalog Number: 113225

---

4ug; Detection:Catalog No:113225 1:600) with mouse brain tissue lysate 4000ug.