

Product name

NPL antibody

Immunogen

[Human NPL Recombinant protein \(GST tag\)](#)

Specificity

Human, Mouse, Rat; other species not tested.

Antibody description

NPL Rabbit Polyclonal antibody. Positive IF detected in MCF-7 cells. Positive WB detected in mouse kidney tissue, Raji cells. Observed molecular weight by Western-blot: 35 kDa

Preparation

This antibody was obtained by immunization of NPL recombinant protein (Accession Number: NM_001200051). Purification method: Antigen affinity purified.

Formulation

PBS with 0.02% sodium azide and 50% glycerol pH 7.3.

Storage

Store at -20°C. DO NOT ALIQUOT

Clonality

Polyclonal

Ig Type

Rabbit IgG

Applications

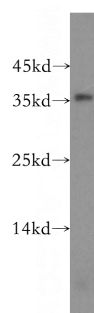
ELISA, WB, IF

Dilutions

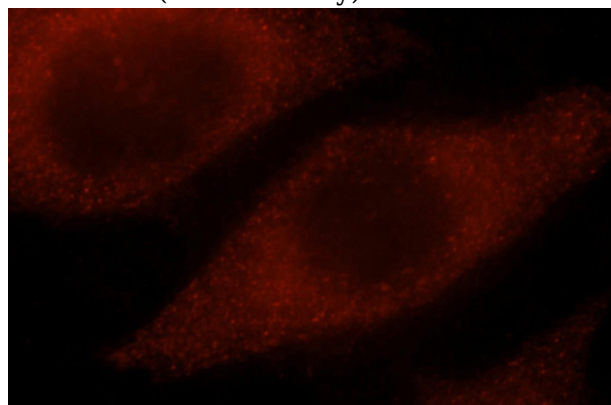
Recommended Dilution:

WB: 1:200-1:2000

IF: 1:10-1:100

Validations

mouse kidney tissue were subjected to SDS PAGE followed by western blot with Catalog No:113217(NPL antibody) at dilution of 1:500



Immunofluorescent analysis of MCF-7 cells, using NPL antibody Catalog No:113217 at 1:25 dilution and Rhodamine-labeled goat anti-rabbit IgG (red).