

NKX2-2 antibody



Catalog Number: 113203

Product name

NKX2-2 antibody

Specificity

Human, Mouse, Rat; other species not tested.

Antibody description

NKX2-2 Rabbit Polyclonal antibody. Positive WB detected in Min6 cells. Positive IF detected in E16.5 mouse pancreas tissue. Observed molecular weight by Western-blot: 30 kDa

Preparation

This antibody was obtained by immunization of NKX2-2 recombinant protein (Accession Number: XM_047440152). Purification method: Antigen affinity purified.

Formulation

PBS with 0.1% sodium azide and 50% glycerol pH 7.3.

Storage

Store at -20°C. DO NOT ALIQUOT

Clonality

Polyclonal

Ig Type

Rabbit IgG

Applications

ELISA, WB, IF

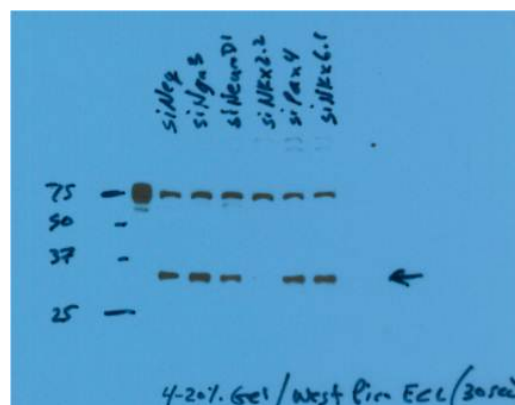
Dilutions

Recommended Dilution:

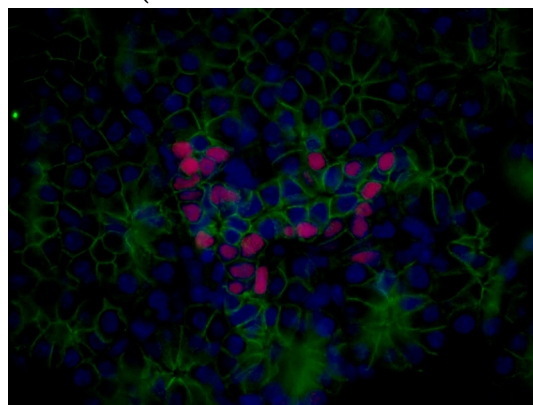
WB: 1:200 - 1:2000

IF: 1:20 - 1:200

Validations



WB result of NKX2-2 antibody (Catalog No:113203) on Min6 cells with siNKX2-2, siPAX4, siNKX6-1 by Dr. Nicholas George, Sarvetnick Lab - UNMC. (the 70 kDa band is unknown)



IF result (trunk or trunk-associated region; nucleus stain; RED) of NKX2-2 antibody (Catalog No:113203) with E16.5 mouse pancreas by Dr. Nicholas George, Sarvetnick Lab - UNMC. (Green, E-Cadherin; RED, NKX2-2; Blue, DAPI)