

# NIT1 antibody



Catalog Number: 113192

## Product name

NIT1 antibody

## Specificity

human, mouse, rat; other species not tested.

## Antibody description

NIT1 Rabbit Polyclonal antibody. Positive IHC detected in human pancreas cancer. Positive WB detected in human heart tissue, HEK-293 cells. Observed molecular weight by Western-blot: 36kd

## Preparation

This antibody was obtained by immunization of NIT1 recombinant protein (Accession Number: NM\_001185092). Purification method: Antigen affinity purified.

## Formulation

PBS with 0.02% sodium azide and 50% glycerol pH 7.3.

## Storage

Store at -20°C. DO NOT ALIQUOT

## Clonality

Polyclonal

## Ig Type

Rabbit IgG

## Applications

ELISA, WB, IHC

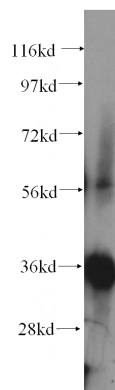
## Dilutions

Recommended Dilution:

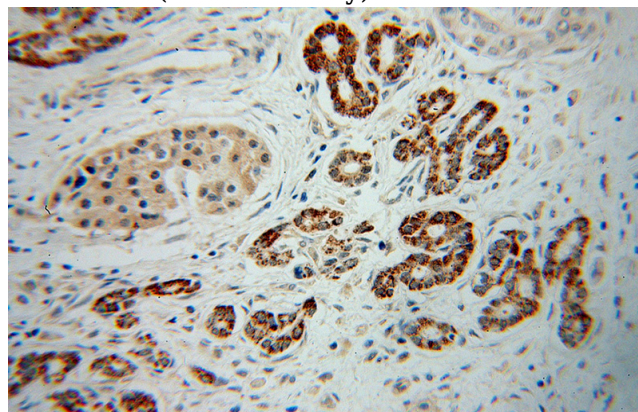
WB: 1:200-1:2000

IHC: 1:20-1:200

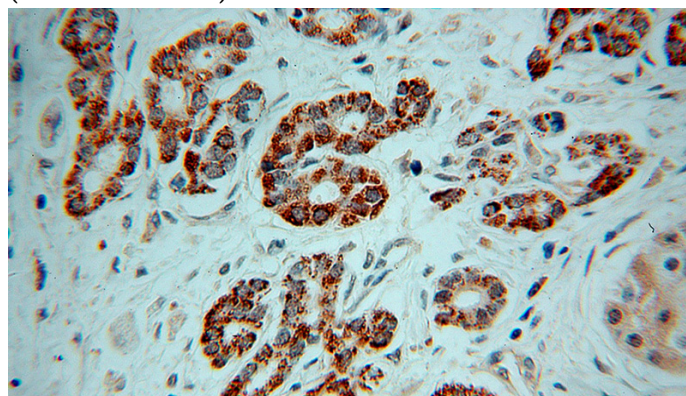
## Validations



human heart tissue were subjected to SDS PAGE followed by western blot with Catalog No:113192(NIT1 antibody) at dilution of 1:100



Immunohistochemical of paraffin-embedded human pancreas cancer using Catalog No:113192(NIT1 antibody) at dilution of 1:50 (under 10x lens)



Immunohistochemical of paraffin-embedded human pancreas cancer using Catalog No:113192(NIT1 antibody) at dilution of 1:50 (under 40x lens)