

NHP2L1 antibody



Catalog Number: 113180

Product name

NHP2L1 antibody

Recommended Dilution:

WB: 1:500-1:5000

Specificity

Human, Mouse; other species not tested.

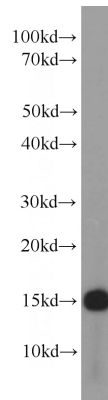
IHC: 1:20-1:200

IF: 1:10-1:100

Antibody description

NHP2L1 Rabbit Polyclonal antibody. Positive WB detected in HeLa cells, HepG2 cells, human brain tissue, MCF7 cells, mouse brain tissue, mouse pancreas tissue, SH-SY5Y cells. Positive IF detected in HeLa cells. Positive IHC detected in human cervical cancer tissue, mouse brain tissue. Observed molecular weight by Western-blot: 15.5 kDa

Validations



Preparation

This antibody was obtained by immunization of NHP2L1 recombinant protein (Accession Number: NM_001003796). Purification method: Antigen affinity purified.

HeLa cells were subjected to SDS PAGE followed by western blot with Catalog No:113180(NHP2L1 antibody) at dilution of 1:1000

Formulation

PBS with 0.02% sodium azide and 50% glycerol pH 7.3.

Storage

Store at -20°C. DO NOT ALIQUOT

Clonality

Polyclonal

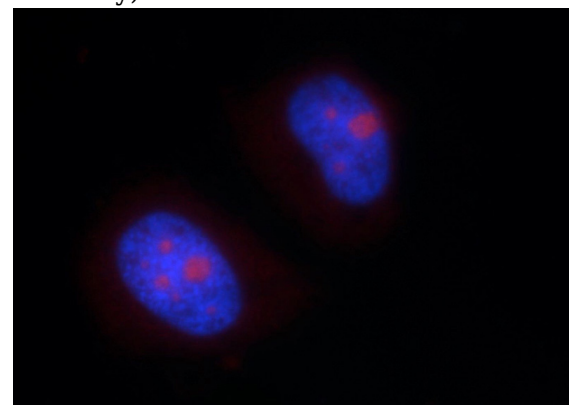
Ig Type

Rabbit IgG

Applications

ELISA, WB, IF, IHC

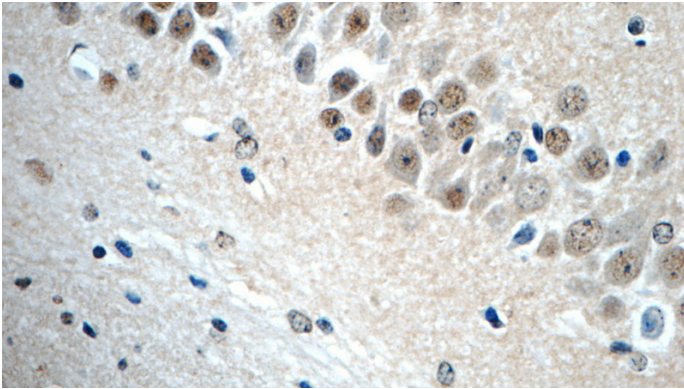
Dilutions



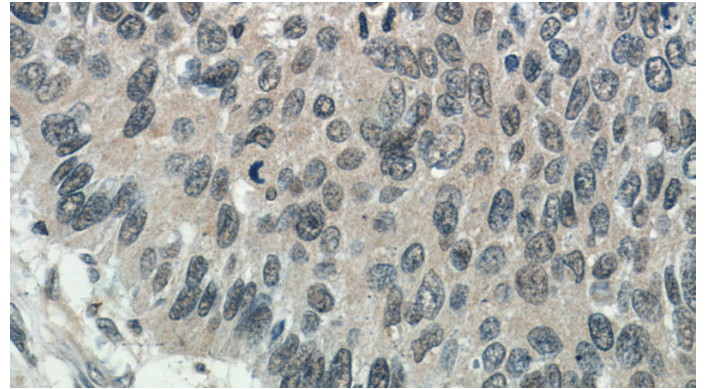
Immunofluorescent analysis of HeLa cells using Catalog No:113180(NHP2L1 Antibody) at dilution of 1:25 and Rhodamine-Goat anti-Rabbit IgG

NHP2L1 antibody

Catalog Number: 113180



Immunohistochemistry of paraffin-embedded mouse brain tissue slide using Catalog No:113180(NHP2L1 Antibody) at dilution of 1:50 (under 40x lens)



Immunohistochemistry of paraffin-embedded human cervical cancer tissue slide using Catalog No:113180(NHP2L1 Antibody) at dilution of 1:50 (under 40x lens)