

NFE2L1 antibody

Catalog Number: 113146

Product name

NFE2L1 antibody

Specificity

Human, Mouse, Rat; other species not tested.

Antibody description

NFE2L1 Rabbit Polyclonal antibody. Positive WB detected in mouse skeletal muscle tissue, Fetal mouse bone, HeLa cells, HepG2 cells, Jurkat cells, K-562 cells. Positive IP detected in mouse skeletal muscle tissue. Observed molecular weight by Western-blot: 65 kDa

Preparation

This antibody was obtained by immunization of NFE2L1 recombinant protein (Accession Number: NM_001330262). Purification method: Antigen affinity purified.

Formulation

PBS with 0.02% sodium azide and 50% glycerol pH 7.3.

Storage

Store at -20°C. DO NOT ALIQUOT

Clonality

Polyclonal

Ig Type

Rabbit IgG

Applications

ELISA, WB, IP

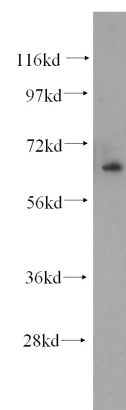
Dilutions

Recommended Dilution:

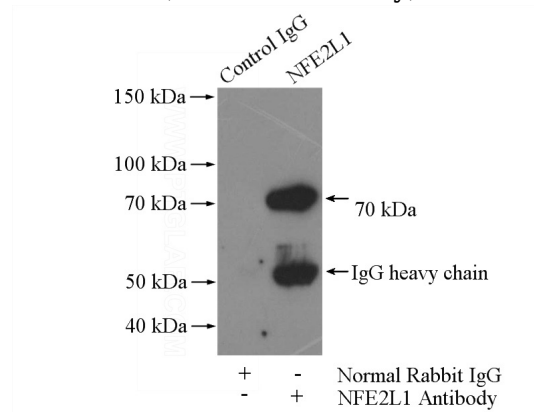
WB: 1:200-1:2000

IP: 1:200-1:2000

Validations



mouse skeletal muscle tissue were subjected to SDS PAGE followed by western blot with Catalog No:113146(NFE2L1 antibody) at dilution of 1:500



IP Result of anti-NFE2L1 (IP:Catalog No:113146, 4ug; Detection:Catalog No:113146 1:500) with mouse skeletal muscle tissue lysate 2200ug.