

# NFE2 antibody



Catalog Number: 113144

## Product name

NFE2 antibody

Recommended Dilution:

WB: 1:200-1:2000

## Immunogen

[Human NFE2 Recombinant protein \(GST tag\)](#)

IP: 1:200-1:2000

IHC: 1:20-1:200

## Specificity

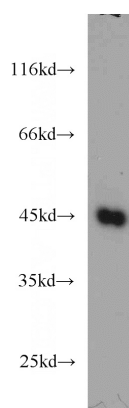
Human; other species not tested.

IF: 1:20-1:200

## Antibody description

NFE2 Rabbit Polyclonal antibody. Positive IHC detected in human colon cancer tissue. Positive IF detected in HepG2 cells. Positive IP detected in K-562 cells. Positive WB detected in K-562 cells, U-937 cells. Observed molecular weight by Western-blot: 45 kDa

## Validations



## Preparation

This antibody was obtained by immunization of NFE2 recombinant protein (Accession Number: NM\_001136023). Purification method: Antigen affinity purified.

K-562 cells were subjected to SDS PAGE followed by western blot with Catalog No:113144(NFE2 antibody) at dilution of 1:500

## Formulation

PBS with 0.1% sodium azide and 50% glycerol pH 7.3.

## Storage

Store at -20°C. DO NOT ALIQUOT

## Clonality

Polyclonal

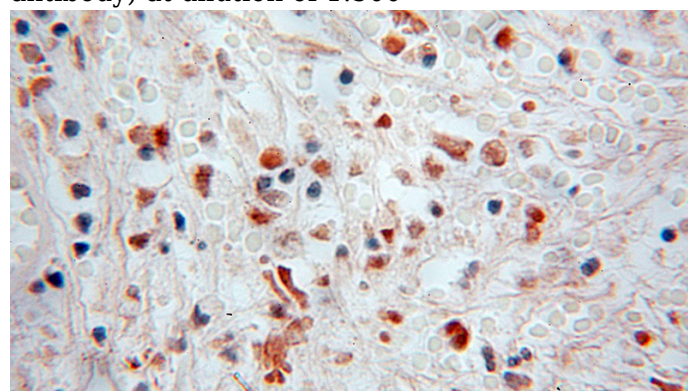
## Ig Type

Rabbit IgG

## Applications

ELISA, WB, IHC, IF, IP

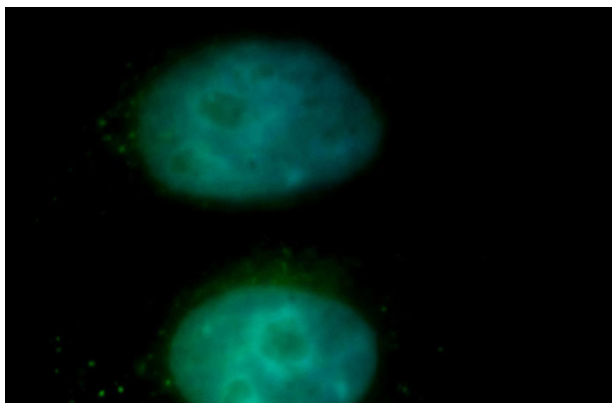
## Dilutions



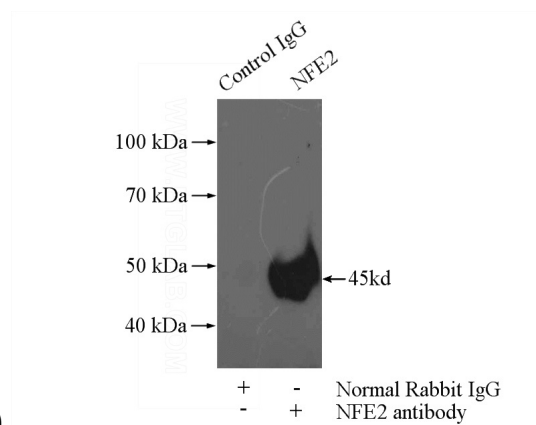
Immunohistochemical of paraffin-embedded human colon cancer using Catalog No:113144(NFE2 antibody) at dilution of 1:50 (under 10x lens)

# NFE2 antibody

Catalog Number: 113144



Immunofluorescent analysis of HepG2 cells, using NFE2 antibody Catalog No:113144 at 1:100 dilution and FITC-labeled donkey anti-rabbit IgG(green). Blue pseudocolor = DAPI (fluorescent



DNA dye).

IP Result of anti-NFE2 (IP:Catalog No:113144, 4ug; Detection:Catalog No:113144 1:500) with K-562 cells lysate 3440ug.