

NET1 antibody



Catalog Number: 113116

Product name

NET1 antibody

IHC: 1:20-1:200

IF: 1:20-1:200

Specificity

Human, Mouse; other species not tested.

Antibody description

NET1 Rabbit Polyclonal antibody. Positive IHC detected in mouse brain tissue, human stomach tissue, human tonsillitis tissue. Positive IF detected in MCF-7 cells. Positive WB detected in mouse brain tissue, SH-SY5Y cells. Observed molecular weight by Western-blot: 62-68 kDa

Preparation

This antibody was obtained by immunization of NET1 recombinant protein (Accession Number: NM_005863). Purification method: Antigen affinity purified.

Formulation

PBS with 0.1% sodium azide and 50% glycerol pH 7.3.

Storage

Store at -20°C. DO NOT ALIQUOT

Clonality

Polyclonal

Ig Type

Rabbit IgG

Applications

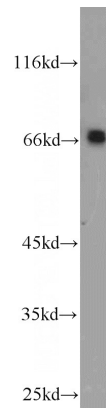
ELISA, WB, IF, IHC

Dilutions

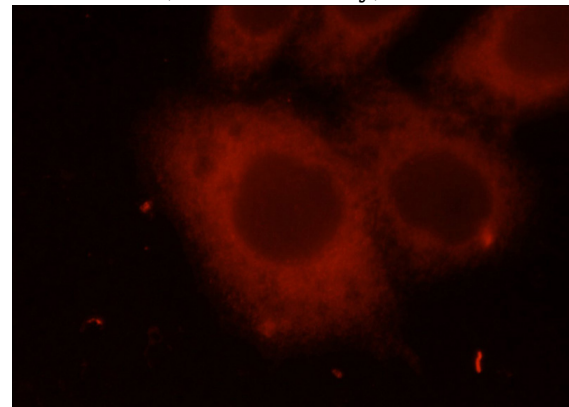
Recommended Dilution:

WB: 1:500-1:5000

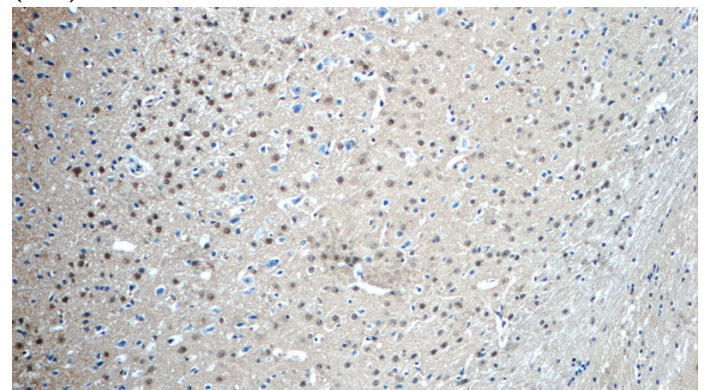
Validations



mouse brain tissue were subjected to SDS PAGE followed by western blot with Catalog No:113116(NET1 antibody) at dilution of 1:1000



Immunofluorescent analysis of MCF-7 cells using Catalog No:113116(NET1 Antibody) at dilution of 1:50 and Rhodamine-labeled goat anti-rabbit IgG (red)

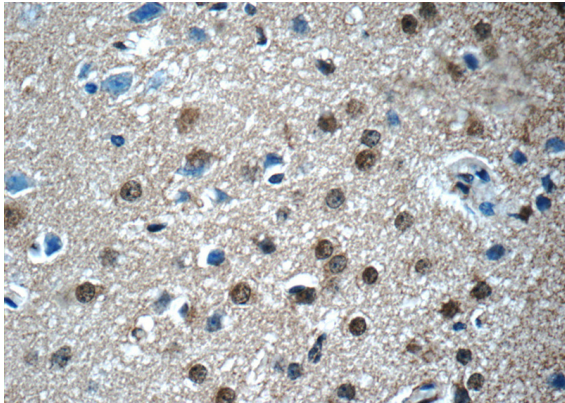


Immunohistochemistry of paraffin-embedded

NET1 antibody

Catalog Number: 113116

mouse brain tissue slide using Catalog No:113116(NET1 Antibody) at dilution of 1:50 (under 10x lens)



Immunohistochemistry of paraffin-embedded mouse brain tissue slide using Catalog No:113116(NET1 Antibody) at dilution of 1:50 (under 40x lens)