

# NELFE antibody



Catalog Number: 113111

## Product name

NELFE antibody

WB: 1:500-1:5000

IP: 1:200-1:2000

## Specificity

Human, Mouse, Rat; other species not tested.

IHC: 1:20-1:200

## Antibody description

NELFE Rabbit Polyclonal antibody. Positive IP detected in mouse brain tissue. Positive WB detected in HEK-293 cells, HeLa cells, mouse brain tissue, mouse eye tissue, mouse placenta tissue, rat brain tissue. Positive IHC detected in human prostate cancer tissue. Observed molecular weight by Western-blot: 44kd

## Preparation

This antibody was obtained by immunization of NELFE recombinant protein (Accession Number: BC011600). Purification method: Antigen affinity purified.

## Formulation

PBS with 0.1% sodium azide and 50% glycerol pH 7.3.

## Storage

Store at -20°C. DO NOT ALIQUOT

## Clonality

Polyclonal

## Ig Type

Rabbit IgG

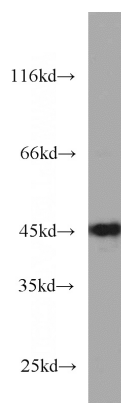
## Applications

ELISA, WB, IHC, IP

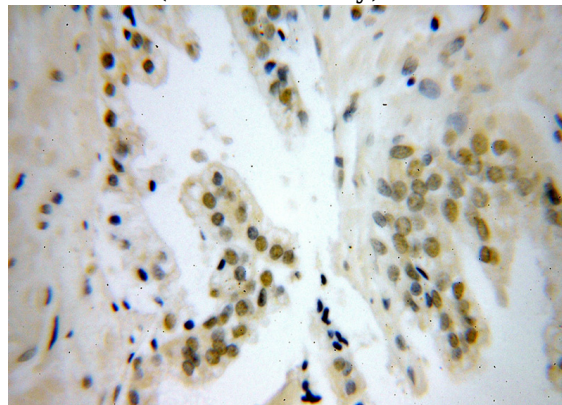
## Dilutions

Recommended Dilution:

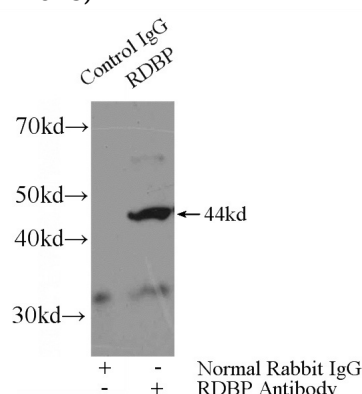
## Validations



HEK-293 cells were subjected to SDS PAGE followed by western blot with Catalog No:113111(RDBP antibody) at dilution of 1:1000



Immunohistochemical of paraffin-embedded human prostate cancer using Catalog No:113111(RDBP antibody) at dilution of 1:100 (under 40x lens)



IP Result of anti-RDBP (IP:Catalog No:113111,

4ug; Detection:Catalog No:113111 1:800) with mouse brain tissue lysate 4680ug.