

# NEK9 antibody



Catalog Number: 113106

## Product name

NEK9 antibody

WB: 1:200-1:2000

IP: 1:200-1:2000

## Specificity

Human, Mouse, Rat; other species not tested.

IHC: 1:20-1:200

IF: 1:20-1:200

## Antibody description

NEK9 Rabbit Polyclonal antibody. Positive IP detected in HeLa cells. Positive WB detected in HeLa cells, A549 cells, human placenta tissue. Positive FC detected in HepG2 cells. Positive IHC detected in human lymphoma tissue. Positive IF detected in HepG2 cells. Observed molecular weight by Western-blot: 120kd

## Preparation

This antibody was obtained by immunization of NEK9 recombinant protein (Accession Number: BC009336). Purification method: Antigen affinity purified.

## Formulation

PBS with 0.1% sodium azide and 50% glycerol pH 7.3.

## Storage

Store at -20°C. DO NOT ALIQUOT

## Clonality

Polyclonal

## Ig Type

Rabbit IgG

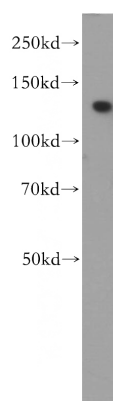
## Applications

ELISA, WB, IHC, IF, FC, IP

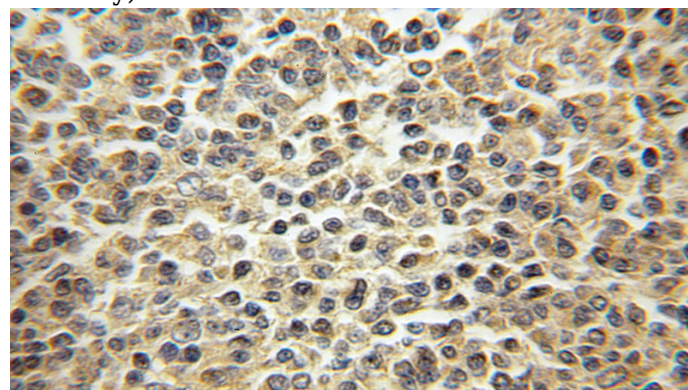
## Dilutions

Recommended Dilution:

## Validations



HeLa cells were subjected to SDS PAGE followed by western blot with Catalog No:113106(NEK9 antibody) at dilution of 1:500

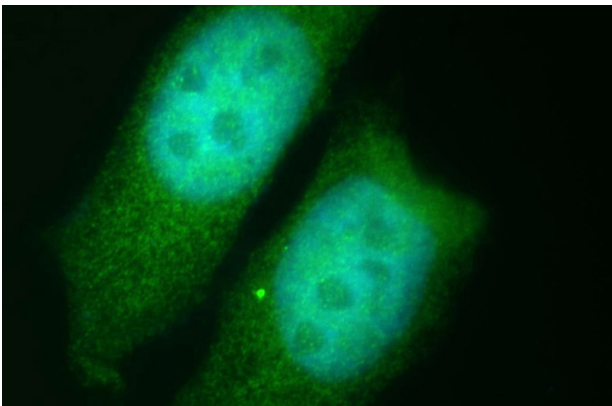


Immunohistochemical of paraffin-embedded human lymphoma using Catalog No:113106(NEK9 antibody) at dilution of 1:50 (under 10x lens)

# NEK9 antibody

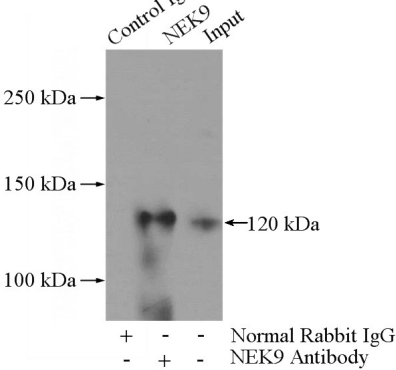


Catalog Number: 113106

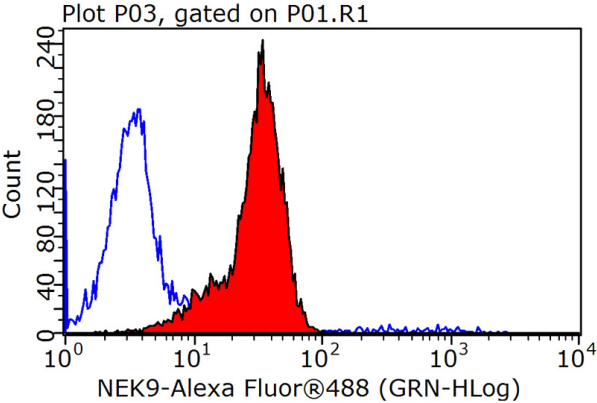


Immunofluorescent analysis of HepG2 cells, using NEK9 antibody Catalog No:113106 at 1:50 dilution and FITC-labeled donkey anti-rabbit IgG(green). Blue pseudocolor = DAPI (fluorescent

DNA dye).



IP Result of anti-NEK9 (IP:Catalog No:113106, 5ug; Detection:Catalog No:113106 1:500) with HeLa cells lysate 2000ug.



1X10<sup>6</sup> HepG2 cells were stained with .2ug NEK9 antibody (Catalog No:113106, red) and control antibody (blue). Fixed with 90% MeOH blocked with 3% BSA (30 min). Alexa Fluor 488-conjugated AffiniPure Goat Anti-Rabbit IgG(H+L) with dilution 1:1000.