

# NDE1 antibody

Catalog Number: 113053

## Product name

NDE1 antibody

## Specificity

Human, Mouse, Rat; other species not tested.

## Antibody description

NDE1 Rabbit Polyclonal antibody. Positive WB detected in A2780 cells, HEK-293 cells, HeLa cells, mouse liver tissue, rat liver tissue. Positive IP detected in HEK-293 cells. Positive IHC detected in human breast cancer tissue, human colon cancer tissue. Positive IF detected in MCF-7 cells. Observed molecular weight by Western-blot: 40kd

## Preparation

This antibody was obtained by immunization of NDE1 recombinant protein (Accession Number: NM\_001143979). Purification method: Antigen affinity purified.

## Formulation

PBS with 0.1% sodium azide and 50% glycerol pH 7.3.

## Storage

Store at -20°C. DO NOT ALIQUOT

## Clonality

Polyclonal

## Ig Type

Rabbit IgG

## Applications

ELISA, WB, IHC, IF, IP

## Dilutions

Recommended Dilution:

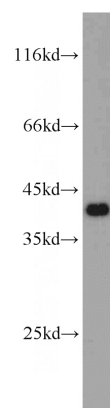
WB: 1:500-1:5000

IP: 1:500-1:5000

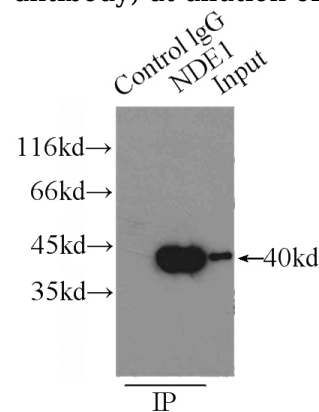
IHC: 1:20-1:200

IF: 1:20-1:200

## Validations



A2780 cells were subjected to SDS PAGE followed by western blot with Catalog No:113053(NDE1 antibody) at dilution of 1:1500

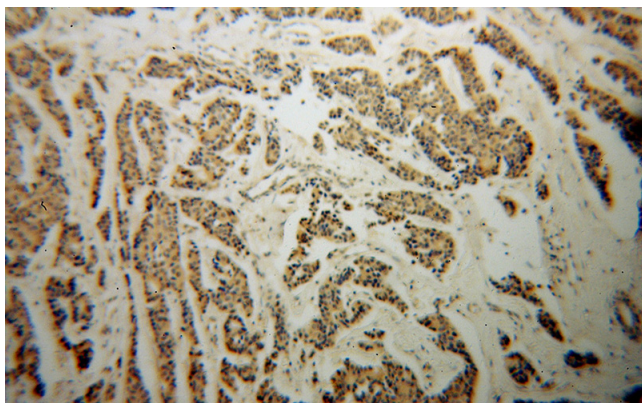


IP Result of anti-NDE1 (IP:Catalog No:113053, 3ug; Detection:Catalog No:113053 1:1500) with HEK-293 cells lysate 4500ug.

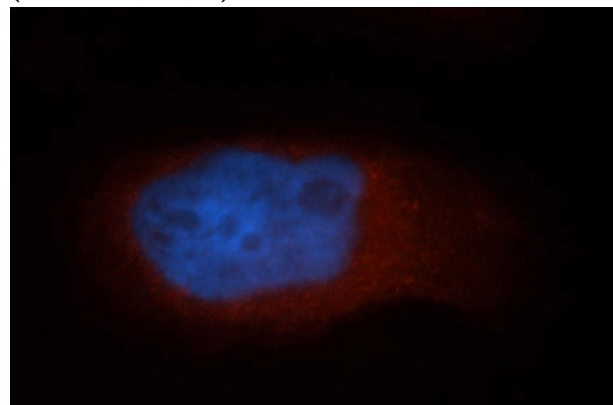
# NDE1 antibody

Catalog Number: 113053

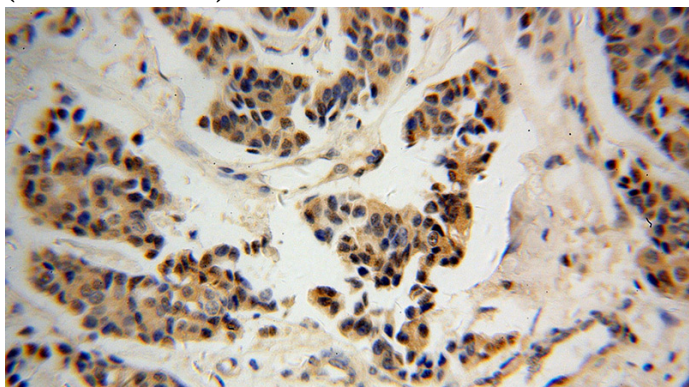
---



Immunohistochemical of paraffin-embedded human breast cancer using Catalog No:113053(NDE1 antibody) at dilution of 1:100 (under 40x lens)



Immunofluorescent analysis of MCF-7 cells, using NDE1 antibody Catalog No:113053 at 1:50 dilution and Rhodamine-labeled goat anti-rabbit IgG (red). Blue pseudocolor = DAPI (fluorescent DNA dye).



Immunohistochemical of paraffin-embedded human breast cancer using Catalog No:113053(NDE1 antibody) at dilution of 1:100 (under 10x lens)