

NCAPH antibody

Catalog Number: 113032

Product name

NCAPH antibody

IP: 1:200-1:2000

IHC: 1:20-1:200

Specificity

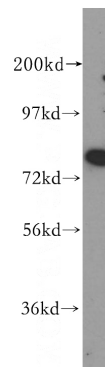
Human, Mouse, Rat; other species not tested.

IF: 1:20-1:200

Antibody description

NCAPH Rabbit Polyclonal antibody. Positive IF detected in HepG2. Positive IHC detected in human colon cancer. Positive WB detected in HeLa cells, A375 cells. Positive IP detected in HeLa cells. Observed molecular weight by Western-blot: 83kd

Validations



Preparation

This antibody was obtained by immunization of NCAPH recombinant protein (Accession Number: NM_015341). Purification method: Antigen affinity purified.

HeLa cells were subjected to SDS PAGE followed by western blot with Catalog No:113032(NCAPH antibody) at dilution of 1:500

Formulation

PBS with 0.1% sodium azide and 50% glycerol pH 7.3.

Storage

Store at -20°C. DO NOT ALIQUOT

Clonality

Polyclonal

Ig Type

Rabbit IgG

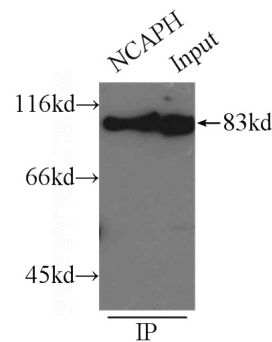
Applications

ELISA, WB, IHC, IF, IP

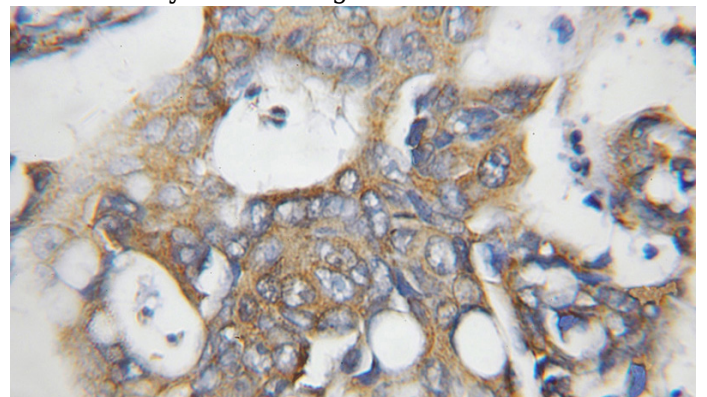
Dilutions

Recommended Dilution:

WB: 1:500-1:5000



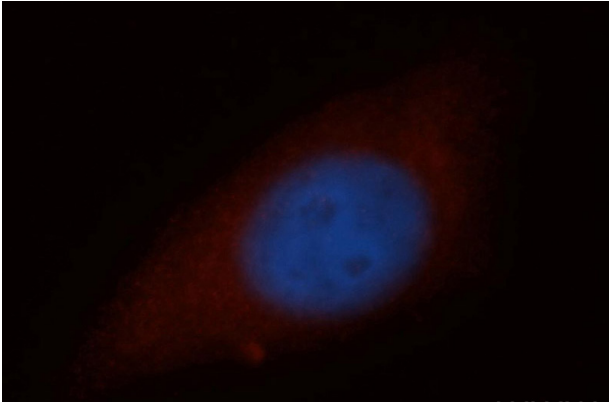
IP Result of anti-NCAPH (IP:Catalog No:113032, 3ug; Detection:Catalog No:113032 1:800) with HeLa cells lysate 3000ug.



NCAPH antibody

Catalog Number: 113032

Immunohistochemical of paraffin-embedded human colon cancer using Catalog No:113032(NCAPH antibody) at dilution of 1:50 (under 10x lens)



Immunofluorescent analysis of HepG2 cells, using NCAPH antibody Catalog No:113032 at 1:50 dilution and Rhodamine-labeled goat anti-rabbit IgG (red). Blue pseudocolor = DAPI (fluorescent DNA dye).