

# NCAPG antibody

Catalog Number: 113031

## Product name

NCAPG antibody

WB: 1:500-1:5000

IP: 1:500-1:5000

## Specificity

Human; other species not tested.

IHC: 1:20-1:200

IF: 1:20-1:200

## Antibody description

NCAPG Rabbit Polyclonal antibody. Positive IP detected in HEK-293 cells. Positive WB detected in HEK-293 cells, HeLa cells. Positive IF detected in HeLa cells. Positive IHC detected in human testis tissue, human cervical cancer tissue. Observed molecular weight by Western-blot: 131 kDa

## Preparation

This antibody was obtained by immunization of NCAPG recombinant protein (Accession Number: NM\_022346). Purification method: Antigen affinity purified.

## Formulation

PBS with 0.1% sodium azide and 50% glycerol pH 7.3.

## Storage

Store at -20°C. DO NOT ALIQUOT

## Clonality

Polyclonal

## Ig Type

Rabbit IgG

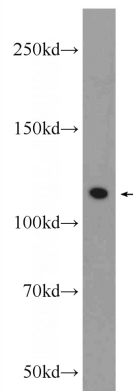
## Applications

ELISA, WB, IHC, IF, IP

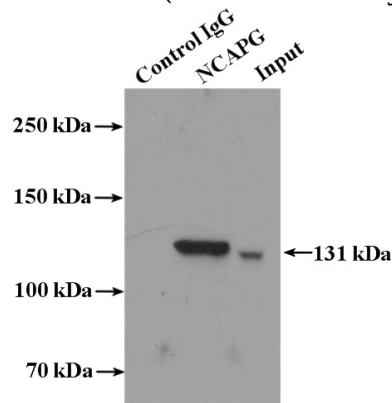
## Dilutions

Recommended Dilution:

## Validations



HEK-293 cells were subjected to SDS PAGE followed by western blot with Catalog No:113031(NCAPG Antibody) at dilution of 1:1500

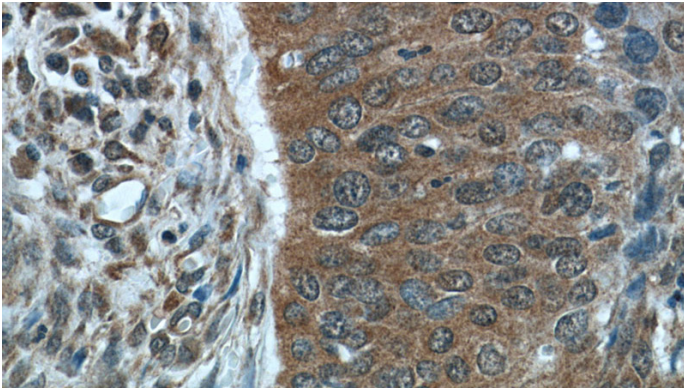


IP Result of anti-NCAPG (IP:Catalog No:113031, 4ug; Detection:Catalog No:113031 1:1000) with HEK-293 cells lysate 3200ug.

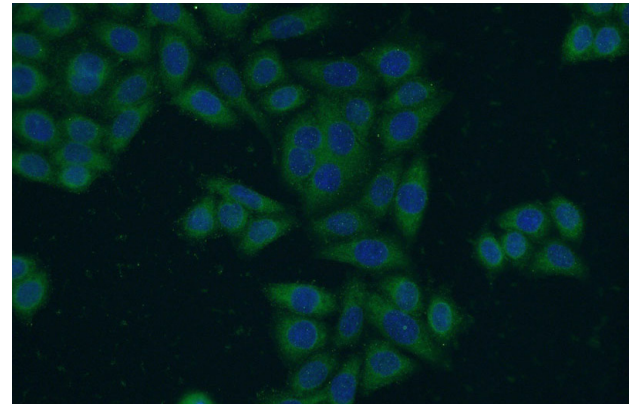
# NCAPG antibody

Catalog Number: 113031

---



Immunohistochemistry of paraffin-embedded human testis tissue slide using Catalog No:113031(NCAPG Antibody) at dilution of 1:50 (under 40x lens)



Immunofluorescent analysis of HeLa cells using Catalog No:113031(NCAPG Antibody) at dilution of 1:50 and Alexa Fluor 488-conjugated AffiniPure Goat Anti-Rabbit IgG(H+L)

Immunohistochemistry of paraffin-embedded human cervical cancer tissue slide using Catalog No:113031(NCAPG Antibody) at dilution of 1:50 (under 40x lens)

