

NANS antibody

Catalog Number: 113022

Product name

NANS antibody

IHC: 1:50-1:500

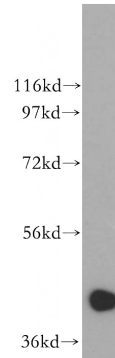
Specificity

Human, Mouse, Rat; other species not tested.

Antibody description

NANS Rabbit Polyclonal antibody. Positive WB detected in HeLa cells, HepG2 cells, human brain tissue. Positive IHC detected in human ovary tumor tissue, human stomach cancer tissue. Observed molecular weight by Western-blot: 40 kDa

Validations



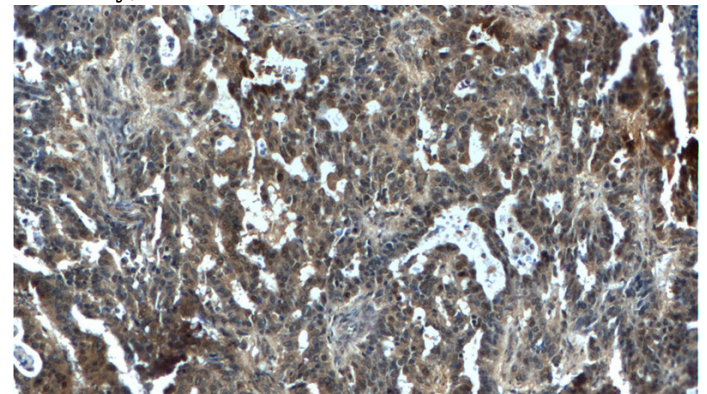
Preparation

This antibody was obtained by immunization of NANS recombinant protein (Accession Number: NM_018946). Purification method: Antigen affinity purified.

HeLa cells were subjected to SDS PAGE followed by western blot with Catalog No:113022(NANS antibody) at dilution of 1:500

Formulation

PBS with 0.02% sodium azide and 50% glycerol pH 7.3.



Storage

Store at -20°C. DO NOT ALIQUOT

Clonality

Polyclonal

Ig Type

Rabbit IgG

Applications

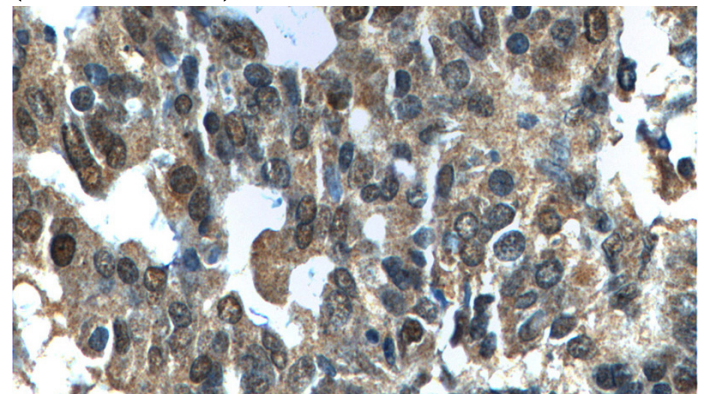
ELISA, WB, IHC

Dilutions

Recommended Dilution:

WB: 1:500-1:5000

Immunohistochemistry of paraffin-embedded human ovary tumor tissue slide using Catalog No:113022(NANS Antibody) at dilution of 1:100 (under 10x lens).



Immunohistochemistry of paraffin-embedded human ovary tumor tissue slide using Catalog No:113022(NANS Antibody) at dilution of 1:100

NANS antibody



Catalog Number: 113022

(under 40x lens).