

# NAGA antibody

Catalog Number: 113015

## Product name

NAGA antibody

IHC: 1:20-1:200

IF: 1:20-1:200

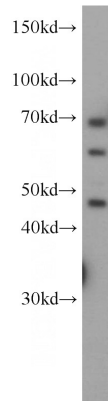
## Specificity

Human, Mouse, Rat; other species not tested.

## Validations

## Antibody description

NAGA Rabbit Polyclonal antibody. Positive IHC detected in human placenta tissue. Positive IF detected in HeLa cells. Positive WB detected in HeLa cells. Observed molecular weight by Western-blot: 48 kDa, 60-70 kDa



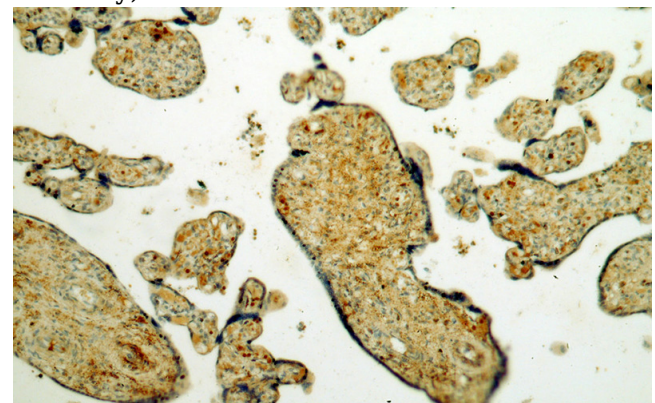
## Preparation

This antibody was obtained by immunization of NAGA recombinant protein (Accession Number: NM\_001362850). Purification method: Antigen affinity purified.

HeLa cells were subjected to SDS PAGE followed by western blot with Catalog No:113015(NAGA antibody) at dilution of 1:1000

## Formulation

PBS with 0.02% sodium azide and 50% glycerol pH 7.3.



## Storage

Store at -20°C. DO NOT ALIQUOT

## Clonality

Polyclonal

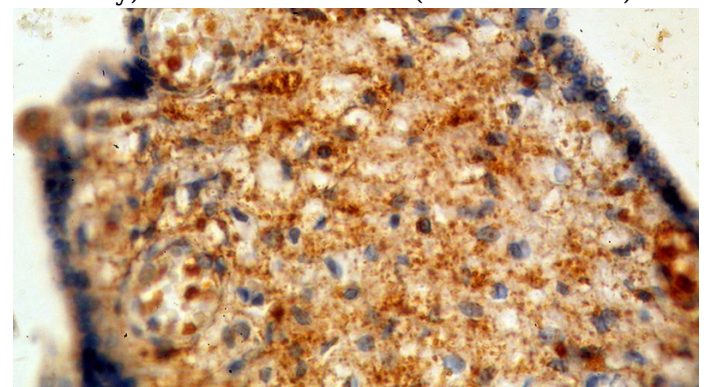
Immunohistochemical of paraffin-embedded human placenta using Catalog No:113015(NAGA antibody) at dilution of 1:100 (under 10x lens)

## Ig Type

Rabbit IgG

## Applications

ELISA, WB, IHC, IF



## Dilutions

Recommended Dilution:

WB: 1:500-1:5000

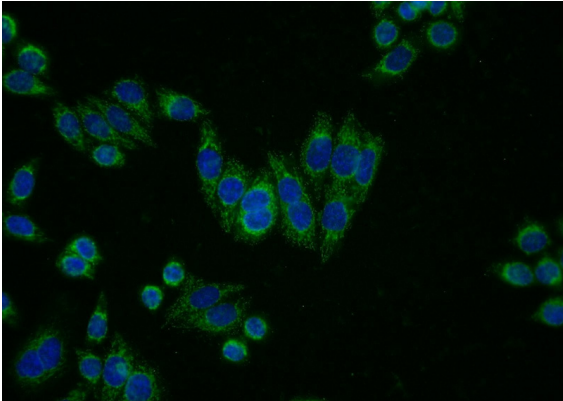
Immunohistochemical of paraffin-embedded human placenta using Catalog No:113015(NAGA

# NAGA antibody

Catalog Number: 113015

---

antibody) at dilution of 1:100 (under 40x lens)



Immunofluorescent analysis of HeLa cells using Catalog No:113015(NAGA Antibody) at dilution of 1:50 and Alexa Fluor 488-conjugated AffiniPure Goat Anti-Rabbit IgG(H+L)