

MYST2 antibody



Catalog Number: 113003

Product name

MYST2 antibody

Recommended Dilution:

WB: 1:200-1:2000

Specificity

Human, Mouse, Rat; other species not tested.

IP: 1:200-1:2000

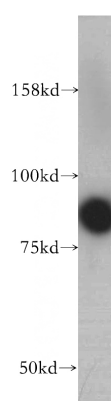
IHC: 1:20-1:200

Antibody description

MYST2 Rabbit Polyclonal antibody. Positive IF detected in NIH/3T3 cells. Positive IHC detected in human ovary tumor tissue, human breast cancer tissue, mouse kidney tissue. Positive IP detected in HeLa cells. Positive WB detected in NIH/3T3 cells, HeLa cells, human testis tissue, Jurkat cells, MCF7 cells, PC-3 cells. Observed molecular weight by Western-blot: 83 kDa

IF: 1:50-1:500

Validations



Preparation

This antibody was obtained by immunization of MYST2 recombinant protein (Accession Number: NM_007067). Purification method: Antigen affinity purified.

NIH/3T3 cells were subjected to SDS PAGE followed by western blot with Catalog No:113003(MYST2 antibody) at dilution of 1:500

Formulation

PBS with 0.02% sodium azide and 50% glycerol pH 7.3.

Storage

Store at -20°C. DO NOT ALIQUOT

Clonality

Polyclonal

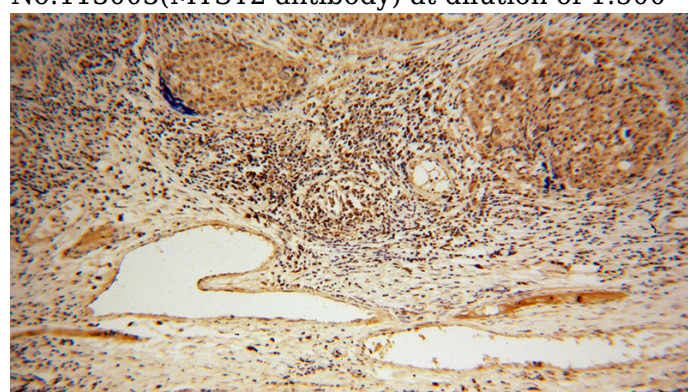
Ig Type

Rabbit IgG

Applications

ELISA, WB, IHC, IP, IF

Dilutions

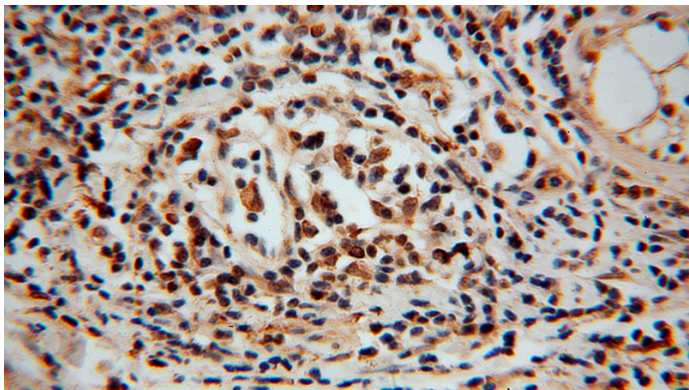


Immunohistochemical of paraffin-embedded human ovary tumor using Catalog No:113003(MYST2 antibody) at dilution of 1:50 (under 10x lens)

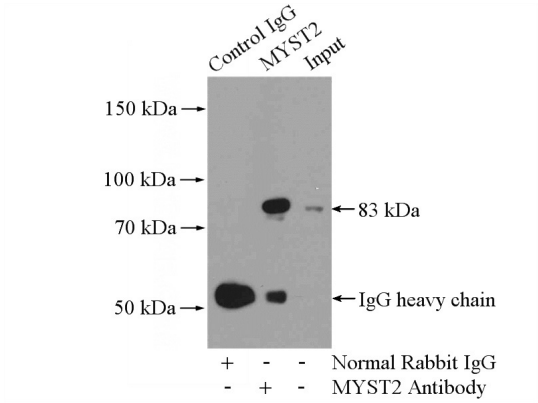
MYST2 antibody



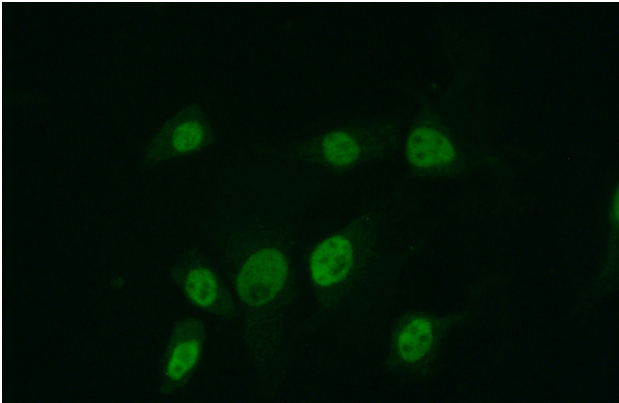
Catalog Number: 113003



Immunohistochemical of paraffin-embedded human ovary tumor using Catalog No:113003(MYST2 antibody) at dilution of 1:50 (under 40x lens)



IP Result of anti-MYST2 (IP:Catalog No:113003, 4ug; Detection:Catalog No:113003 1:500) with HeLa cells lysate 2480ug.



Immunofluorescent analysis of (10% Formaldehyde) fixed NIH/3T3 cells using Catalog No:113003(MYST2 Antibody) at dilution of 1:50 and Alexa Fluor 488-conjugated AffiniPure Goat Anti-Rabbit IgG(H+L)