

MYL7 antibody



Catalog Number: 112969

Product name

MYL7 antibody

IP: 1:200-1:2000

IHC: 1:20-1:200

Specificity

Human, Mouse, Rat; other species not tested.

Antibody description

MYL7 Rabbit Polyclonal antibody. Positive WB detected in mouse heart tissue, human heart tissue, mouse skeletal muscle tissue. Positive IP detected in mouse heart tissue. Positive IHC detected in human heart tissue. Observed molecular weight by Western-blot: 19 kDa

Preparation

This antibody was obtained by immunization of MYL7 recombinant protein (Accession Number: NM_021223). Purification method: Antigen affinity purified.

Formulation

PBS with 0.02% sodium azide and 50% glycerol pH 7.3.

Storage

Store at -20°C. DO NOT ALIQUOT

Clonality

Polyclonal

Ig Type

Rabbit IgG

Applications

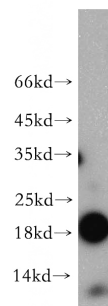
ELISA, WB, IHC, IP

Dilutions

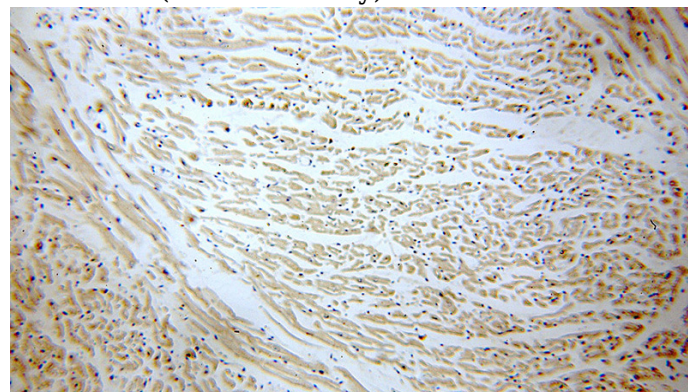
Recommended Dilution:

WB: 1:500-1:5000

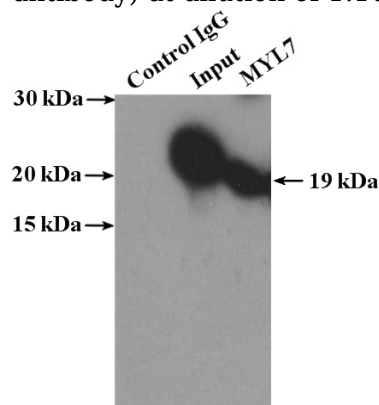
Validations



mouse heart tissue were subjected to SDS PAGE followed by western blot with Catalog No:112969(MYL7 antibody) at dilution of 1:800



Immunohistochemical of paraffin-embedded human heart using Catalog No:112969(MYL7 antibody) at dilution of 1:100 (under 10x lens)



IP Result of anti-MYL7 (IP:Catalog No:112969, 4ug; Detection:Catalog No:112969 1:700) with

MYL7 antibody



Catalog Number: 112969

mouse heart tissue lysate 4000ug.