

NAT1 antibody

Catalog Number: 112960

Product name

NAT1 antibody

IHC: 1:20-1:200

IF: 1:20-1:200

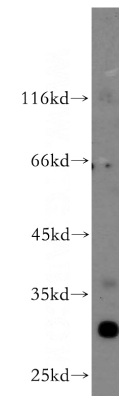
Specificity

Human, Mouse, Rat; other species not tested.

Validations

Antibody description

NAT1 Rabbit Polyclonal antibody. Positive WB detected in A375 cells, PC-3 cells. Positive IHC detected in human breast cancer tissue. Positive IF detected in A375 cells. Positive FC detected in MCF-7 cells. Observed molecular weight by Western-blot: 32-34 kDa



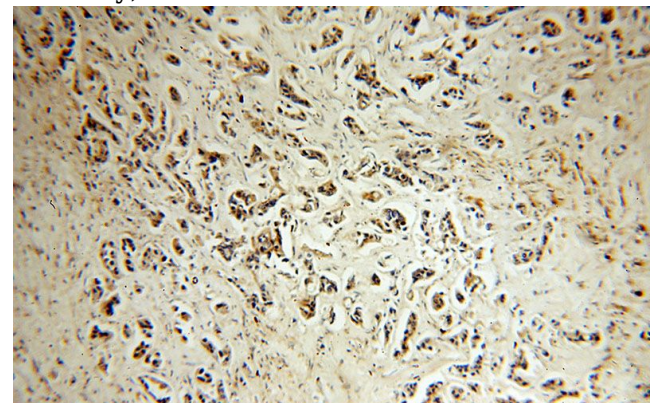
Preparation

This antibody was obtained by immunization of NAT1 recombinant protein (Accession Number: NM_001160171). Purification method: Antigen affinity purified.

A375 cells were subjected to SDS PAGE followed by western blot with Catalog No:112960(NAT1 antibody) at dilution of 1:300

Formulation

PBS with 0.02% sodium azide and 50% glycerol pH 7.3.



Storage

Store at -20°C. DO NOT ALIQUOT

Clonality

Polyclonal

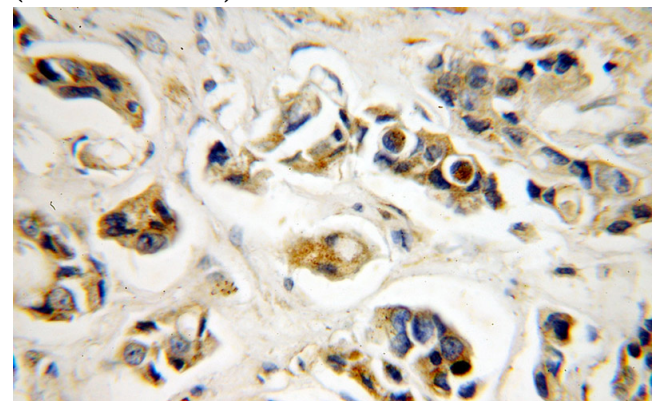
Immunohistochemical of paraffin-embedded human breast cancer using Catalog No:112960(NAT1 antibody) at dilution of 1:50 (under 10x lens)

Ig Type

Rabbit IgG

Applications

ELISA, WB, IHC, FC, IF



Dilutions

Recommended Dilution:

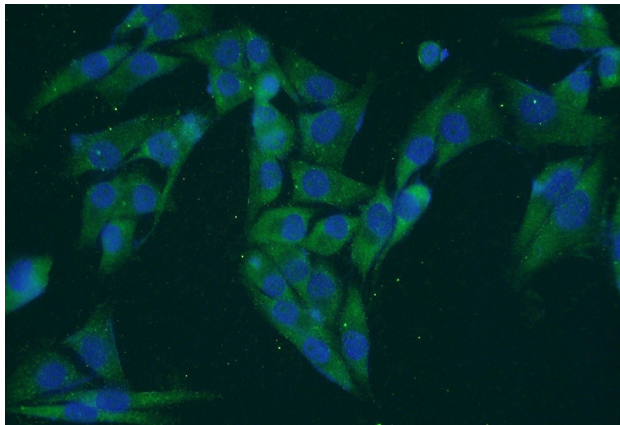
WB: 1:200-1:2000

Immunohistochemical of paraffin-embedded

NAT1 antibody

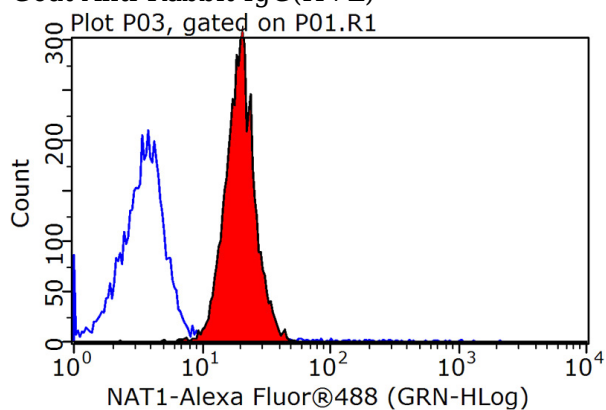
Catalog Number: 112960

human breast cancer using Catalog No:112960(NAT1 antibody) at dilution of 1:50 (under 40x lens)



Immunofluorescent analysis of A375 cells using Catalog No:112960(NAT1 Antibody) at dilution of 1:50 and Alexa Fluor 488-conjugated AffiniPure

Goat Anti-Rabbit IgG(H+L)



1×10^6 MCF-7 cells were stained with 0.2ug NAT1 antibody (Catalog No:112960, red) and control antibody (blue). Fixed with 90% MeOH blocked with 3% BSA (30 min). Alexa Fluor 488-conjugated AffiniPure Goat Anti-Rabbit IgG(H+L) with dilution 1:1500.