

# NAP1L4 antibody



Catalog Number: 112946

## Product name

NAP1L4 antibody

## Immunogen

[Human NAP1L4 Recombinant protein \(His tag\)](#)

## Specificity

Human, Mouse, Rat; other species not tested.

## Antibody description

NAP1L4 Rabbit Polyclonal antibody. Positive WB detected in HeLa cells, HEK-293 cells, mouse liver tissue, mouse testis tissue. Positive IP detected in HeLa cells. Positive IHC detected in human liver tissue. Observed molecular weight by Western-blot: 52 kDa

## Preparation

This antibody was obtained by immunization of NAP1L4 recombinant protein (Accession Number: NM\_001369376). Purification method: Antigen affinity purified.

## Formulation

PBS with 0.02% sodium azide and 50% glycerol pH 7.3.

## Storage

Store at -20°C. DO NOT ALIQUOT

## Clonality

Polyclonal

## Ig Type

Rabbit IgG

## Applications

ELISA, WB, IHC, IP

## Dilutions

Recommended Dilution:

WB: 1:1000-1:10000

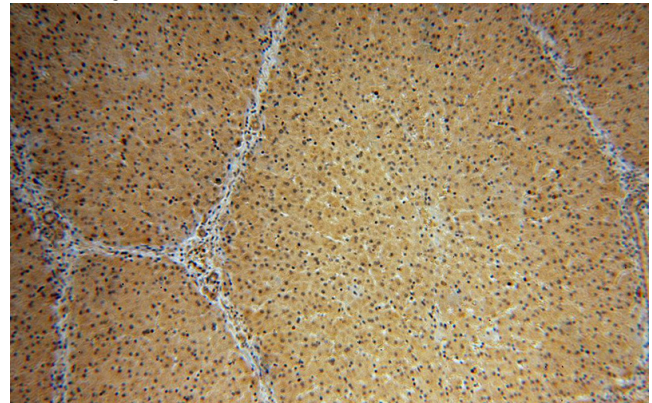
IP: 1:500-1:5000

IHC: 1:20-1:200

## Validations



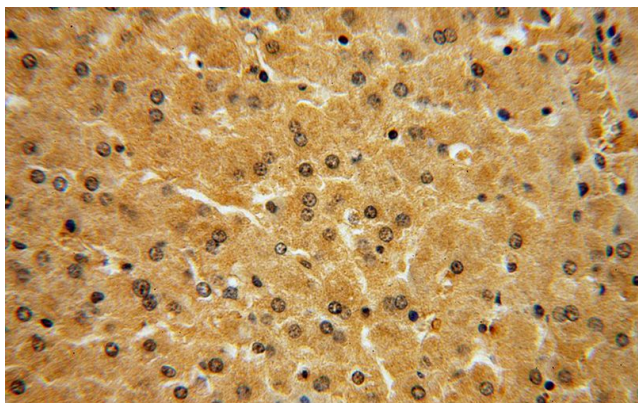
HeLa cells were subjected to SDS PAGE followed by western blot with Catalog No:112946(NAP1L4 antibody) at dilution of 1:1000



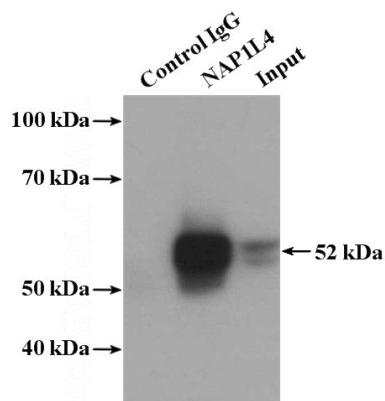
Immunohistochemical of paraffin-embedded human liver using Catalog No:112946(NAP1L4 antibody) at dilution of 1:100 (under 10x lens)

# NAP1L4 antibody

Catalog Number: 112946



Immunohistochemical of paraffin-embedded human liver using Catalog No:112946(NAP1L4 antibody) at dilution of 1:100 (under 40x lens)



IP Result of anti-NAP1L4 (IP:Catalog No:112946, 4ug; Detection:Catalog No:112946 1:1000) with HeLa cells lysate 4000ug.