

# NAP1L1 antibody



Catalog Number: 112945

## Product name

NAP1L1 antibody

## Specificity

Human, Mouse, Rat; other species not tested.

## Antibody description

NAP1L1 Rabbit Polyclonal antibody. Positive IP detected in HEK-293 cells. Positive WB detected in Jurkat cells, A431 cells, HEK-293 cells, HeLa cells, HL-60 cells, HT-1080 cells, mouse thymus tissue. Positive IHC detected in human testis tissue, human brain tissue, human heart tissue, human kidney tissue, human lung tissue, human ovary tissue, human placenta tissue, human skin tissue, human spleen tissue. Positive IF detected in MCF-7 cells, Hela cells. Positive FC detected in MCF-7 cells. Observed molecular weight by Western-blot: 55-60 kDa

## Preparation

This antibody was obtained by immunization of NAP1L1 recombinant protein (Accession Number: NM\_001330231). Purification method: Antigen affinity purified.

## Formulation

PBS with 0.02% sodium azide and 50% glycerol pH 7.3.

## Storage

Store at -20°C. DO NOT ALIQUOT

## Clonality

Polyclonal

## Ig Type

Rabbit IgG

## Applications

ELISA, WB, IHC, IF, FC, IP

## Dilutions

Recommended Dilution:

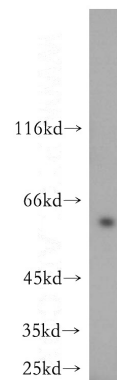
WB: 1:200-1:2000

IP: 1:500-1:5000

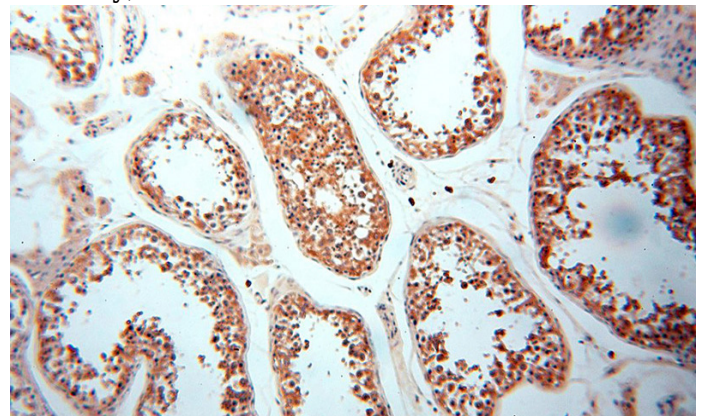
IHC: 1:20-1:200

IF: 1:20-1:200

## Validations



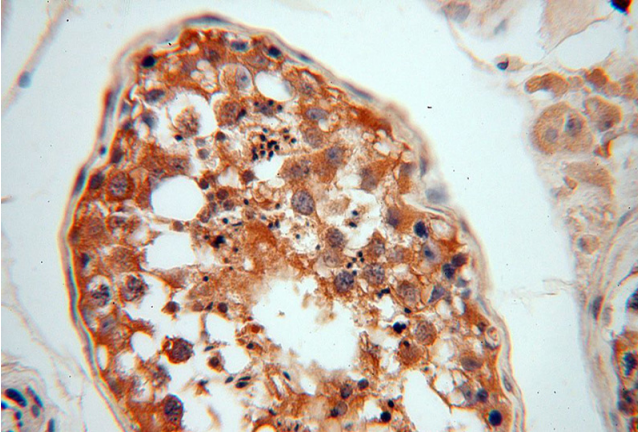
Jurkat cells were subjected to SDS PAGE followed by western blot with Catalog No:112945(NAP1L1 antibody) at dilution of 1:500



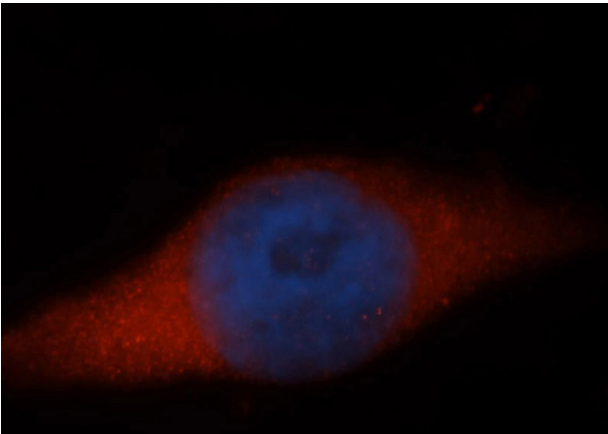
Immunohistochemical of paraffin-embedded human testis using Catalog No:112945(NAP1L1 antibody) at dilution of 1:50 (under 10x lens)

# NAP1L1 antibody

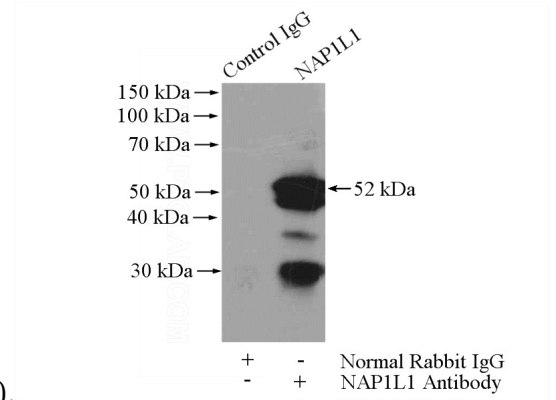
Catalog Number: 112945



Immunohistochemical of paraffin-embedded human testis using Catalog No:112945(NAP1L1 antibody) at dilution of 1:50 (under 40x lens)

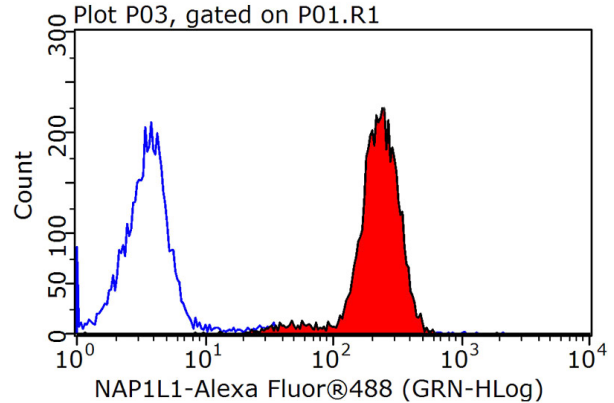


Immunofluorescent analysis of MCF-7 cells, using NAP1L1 antibody Catalog No:112945 at 1:50 dilution and Rhodamine-labeled goat anti-rabbit IgG (red). Blue pseudocolor = DAPI (fluorescent



DNA dye).

IP Result of anti-NAP1L1 (IP:Catalog No:112945, 4ug; Detection:Catalog No:112945 1:1000) with HEK-293 cells lysate 800ug.



$1 \times 10^6$  MCF-7 cells were stained with 0.2ug NAP1L1 antibody (Catalog No:112945, red) and control antibody (blue). Fixed with 90% MeOH blocked with 3% BSA (30 min). Alexa Fluor 488-conjugated AffiniPure Goat Anti-Rabbit IgG(H+L) with dilution 1:1500.