

MYL2 antibody

Catalog Number: 112942

Product name

MYL2 antibody

IP: 1:200-1:2000

IHC: 1:20-1:200

Specificity

Human, Mouse, Rat; other species not tested.

Antibody description

MYL2 Rabbit Polyclonal antibody. Positive WB detected in rat heart tissue. Positive IP detected in mouse brain tissue. Positive IHC detected in human heart tissue, human skeletal muscle tissue. Observed molecular weight by Western-blot: 18-20 kDa

Preparation

This antibody was obtained by immunization of Peptide (Accession Number: NM_000432). Purification method: Antigen affinity purified.

Formulation

PBS with 0.02% sodium azide and 50% glycerol pH 7.3.

Storage

Store at -20°C. DO NOT ALIQUOT

Clonality

Polyclonal

Ig Type

Rabbit IgG

Applications

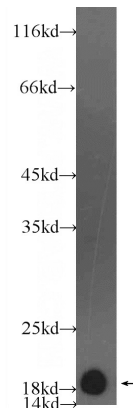
ELISA, IHC, WB, IP

Dilutions

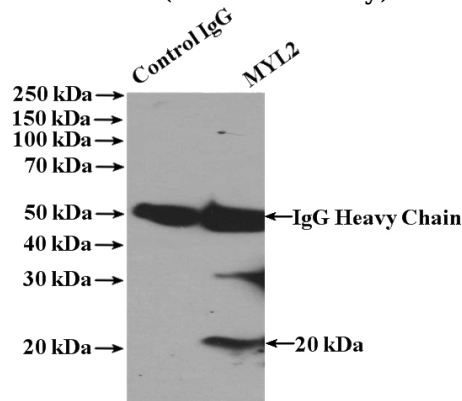
Recommended Dilution:

WB: 1:2000-1:20000

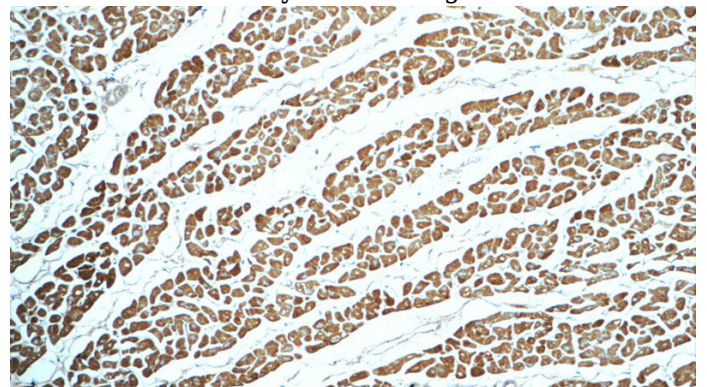
Validations



rat heart tissue were subjected to SDS PAGE followed by western blot with Catalog No:112942(MYL2 Antibody) at dilution of 1:5000



IP Result of anti-MYL2 (IP:Catalog No:112942, 4ug; Detection:Catalog No:112942 1:500) with mouse brain tissue lysate 4000ug.

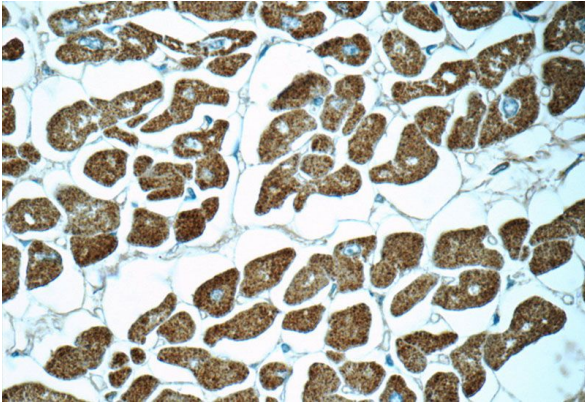


Immunohistochemistry of paraffin-embedded human heart tissue slide using Catalog

MYL2 antibody

Catalog Number: 112942

No:112942(MYL2 Antibody) at dilution of 1:50
(under 10x lens)



Immunohistochemistry of paraffin-embedded
human heart tissue slide using Catalog
No:112942(MYL2 Antibody) at dilution of 1:50
(under 40x lens)