

MYL12A antibody



Catalog Number: 112940

Product name

MYL12A antibody

WB: 1:200-1:2000

IHC: 1:20-1:200

Specificity

Human, Mouse, Rat; other species not tested.

Antibody description

MYL12A Rabbit Polyclonal antibody. Positive WB detected in NIH/3T3 cells, HEK-293 cells, human skeletal muscle tissue, Jurkat cells, mouse bladder tissue, mouse heart tissue. Positive IHC detected in human heart tissue, human skeletal muscle tissue. Observed molecular weight by Western-blot: 19-20

Preparation

This antibody was obtained by immunization of MYL12A recombinant protein (Accession Number: NM_001303048). Purification method: Antigen affinity purified.

Formulation

PBS with 0.1% sodium azide and 50% glycerol pH 7.3.

Storage

Store at -20°C. DO NOT ALIQUOT

Clonality

Polyclonal

Ig Type

Rabbit IgG

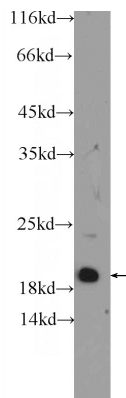
Applications

ELISA, WB, IHC

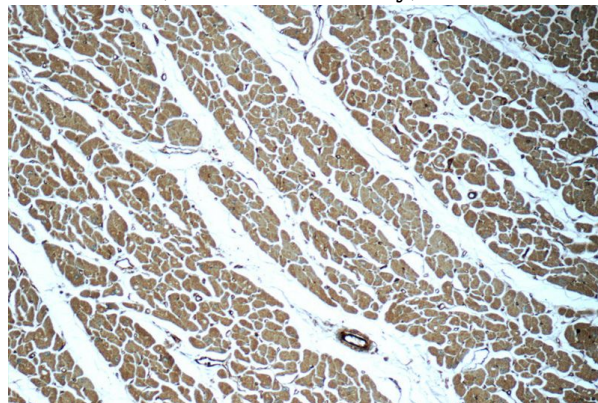
Dilutions

Recommended Dilution:

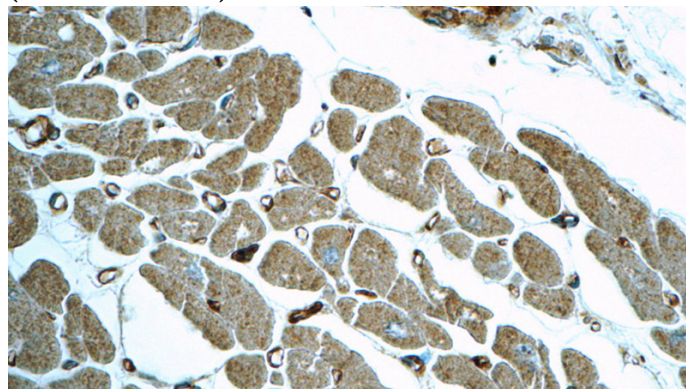
Validations



NIH/3T3 cells were subjected to SDS PAGE followed by western blot with Catalog No:112940(MYL12A Antibody) at dilution of 1:600



Immunohistochemistry of paraffin-embedded human heart tissue slide using Catalog No:112940(MYL12A Antibody) at dilution of 1:50 (under 10x lens)



Immunohistochemistry of paraffin-embedded

MYL12A antibody



Catalog Number: 112940

human heart tissue slide using Catalog

No:112940(MYL12A Antibody) at dilution of 1:50
(under 40x lens)