

# Myh9 antibody

Catalog Number: 112938

## Product name

Myh9 antibody

## Specificity

human; other species not tested.

## Antibody description

Myh9 Rabbit Polyclonal antibody. Positive IF detected in Hela. Positive IHC detected in human lung cancer. Positive WB detected in HL-60 cells, human kidney tissue. Observed molecular weight by Western-blot: 224 kDa

## Preparation

This antibody was obtained by immunization of Peptide (Accession Number: NM\_022410). Purification method: Antigen affinity purified.

## Formulation

PBS with 0.02% sodium azide and 50% glycerol pH 7.3.

## Storage

Store at -20°C. DO NOT ALIQUOT

## Clonality

Polyclonal

## Ig Type

Rabbit IgG

## Applications

ELISA, WB, IHC, IF

## Dilutions

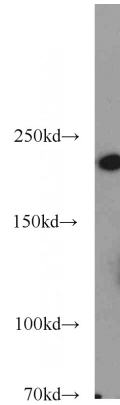
Recommended Dilution:

WB: 1:200-1:2000

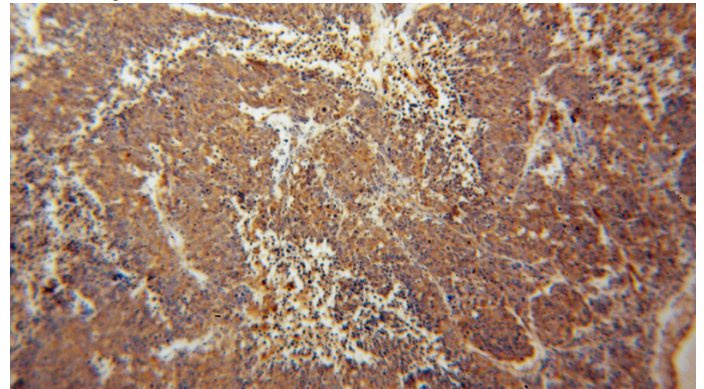
IHC: 1:20-1:200

IF: 1:10-1:100

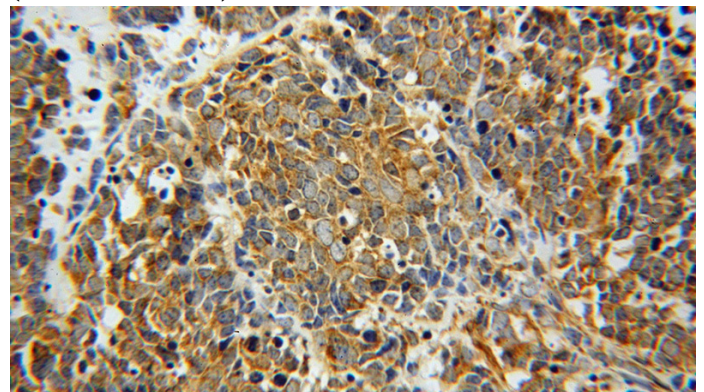
## Validations



HL-60 cells were subjected to SDS PAGE followed by western blot with Catalog No:112938(Myh9 antibody) at dilution of 1:500



Immunohistochemical of paraffin-embedded human lung cancer using Catalog No:112938(Myh9 antibody) at dilution of 1:50 (under 10x lens)



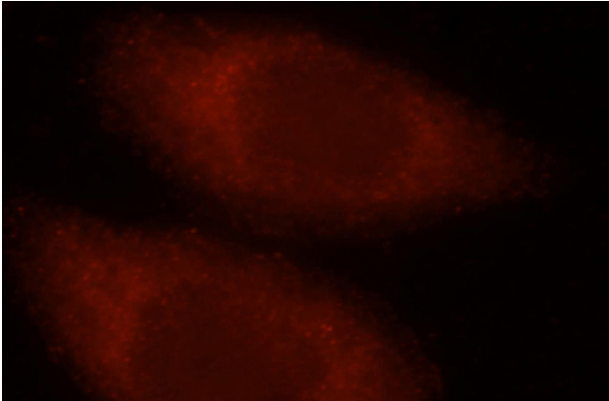
Immunohistochemical of paraffin-embedded human lung cancer using Catalog No:112938(Myh9 antibody) at dilution of 1:50

# Myh9 antibody

Catalog Number: 112938

---

(under 40x lens)



Immunofluorescent analysis of HeLa cells, using Myh9 antibody Catalog No:112938 at 1:25 dilution and Rhodamine-labeled goat anti-rabbit IgG (red).