

MYH7-specific antibody

Catalog Number: 112936

Product name

MYH7-specific antibody

IP: 1:200-1:1000

IHC: 1:20-1:200

Specificity

Human, Mouse; other species not tested.

Antibody description

MYH7-specific Rabbit Polyclonal antibody. Positive WB detected in mouse heart tissue. Positive IP detected in mouse heart tissue. Positive IHC detected in mouse heart tissue, human skeletal muscle tissue. Observed molecular weight by Western-blot: 200-220 kDa

Preparation

This antibody was obtained by immunization of Peptide (Accession Number: NM_000257). Purification method: Antigen affinity purified.

Formulation

PBS with 0.02% sodium azide and 50% glycerol pH 7.3.

Storage

Store at -20°C. DO NOT ALIQUOT

Clonality

Polyclonal

Ig Type

Rabbit IgG

Applications

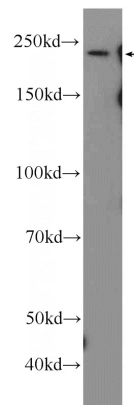
ELISA, IHC, WB, IP

Dilutions

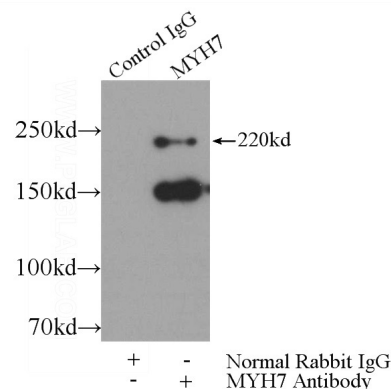
Recommended Dilution:

WB: 1:1000-1:10000

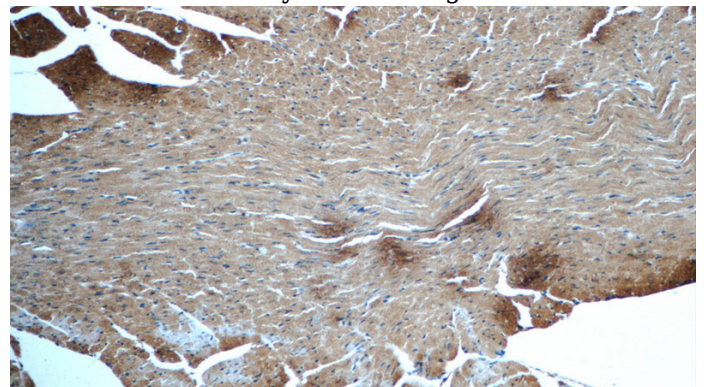
Validations



mouse heart tissue were subjected to SDS PAGE followed by western blot with Catalog No:112936(MYH7 Antibody) at dilution of 1:2000



IP Result of anti-MYH7 (IP:Catalog No:112936, 5ug; Detection:Catalog No:112936 1:300) with mouse heart tissue lysate 4000ug.

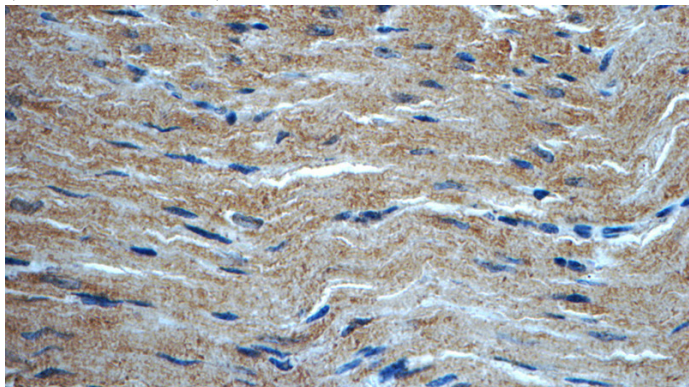


Immunohistochemistry of paraffin-embedded mouse heart tissue slide using Catalog No:112936 antibody.

MYH7-specific antibody

Catalog Number: 112936

No:112936(MYH7 Antibody) at dilution of 1:50
(under 10x lens)



Immunohistochemistry of paraffin-embedded
mouse heart tissue slide using Catalog
No:112936(MYH7 Antibody) at dilution of 1:50
(under 40x lens)