

# MYH2-specific antibody

Catalog Number: 112932

## Product name

MYH2-specific antibody

## Specificity

Human; other species not tested.

## Antibody description

MYH2-specific Rabbit Polyclonal antibody. Positive WB detected in multi-cells/tissue, human skeletal muscle tissue. Positive IHC detected in human skeletal muscle tissue, human bladder tissue. Observed molecular weight by Western-blot: 200kd

## Preparation

This antibody was obtained by immunization of Peptide (Accession Number: NM\_017534). Purification method: Antigen affinity purified.

## Formulation

0.1M NaHCO<sub>3</sub>, 0.1M glycine, 0.02% sodium azide and 50% glycerol pH 7.3.

## Storage

Store at -20°C. DO NOT ALIQUOT

## Clonality

Polyclonal

## Ig Type

Rabbit IgG

## Applications

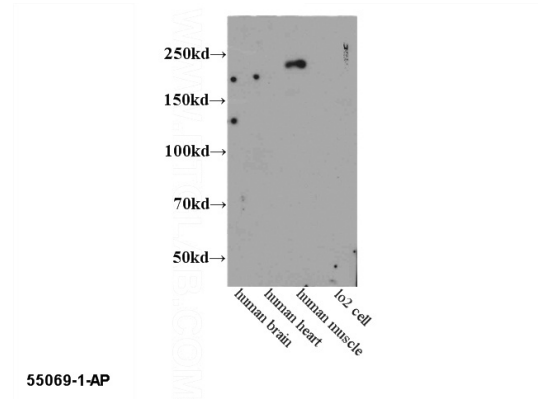
ELISA, IHC, WB

## Dilutions

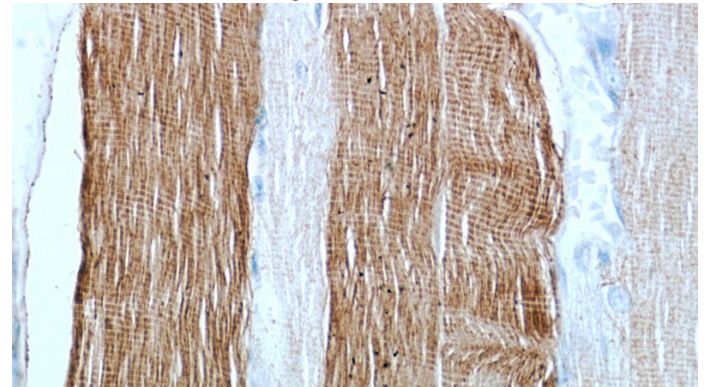
Recommended Dilution:

WB: N/AIHC: 1:20-1:200

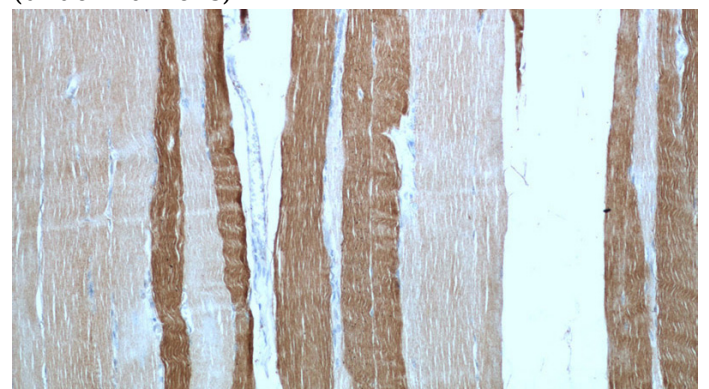
## Validations



WB results of Catalog No:112932(anti-MYH2).



Immunohistochemical of paraffin-embedded human skeletal muscle using Catalog No:112932(MYH2 antibody) at dilution of 1:50 (under 40x lens)



Immunohistochemical of paraffin-embedded human skeletal muscle using Catalog No:112932(MYH2 antibody) at dilution of 1:50 (under 10x lens)