

# MYH1 antibody

Catalog Number: 112928

## Product name

MYH1 antibody

IP: 1:500-1:5000

IHC: 1:20-1:200

## Specificity

Human, Mouse; other species not tested.

## Antibody description

MYH1 Rabbit Polyclonal antibody. Positive WB detected in Transfected HEK-293 cells. Positive IP detected in mouse skeletal muscle tissue. Positive IHC detected in human skeletal muscle tissue. Observed molecular weight by Western-blot: 220-230 kDa

## Preparation

This antibody was obtained by immunization of MYH1 recombinant protein (Accession Number: NM\_005963). Purification method: Antigen affinity purified.

## Formulation

PBS with 0.1% sodium azide and 50% glycerol pH 7.3.

## Storage

Store at -20°C. DO NOT ALIQUOT

## Clonality

Polyclonal

## Ig Type

Rabbit IgG

## Applications

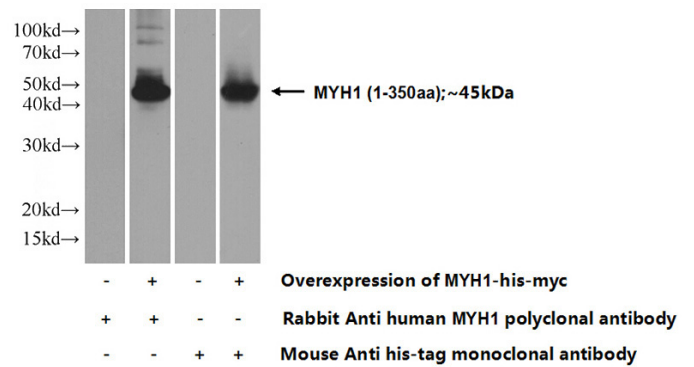
ELISA, IHC, IP, WB

## Dilutions

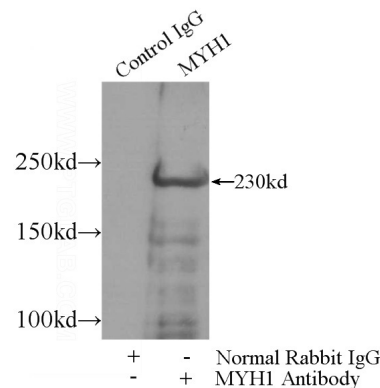
Recommended Dilution:

WB: 1:500-1:5000

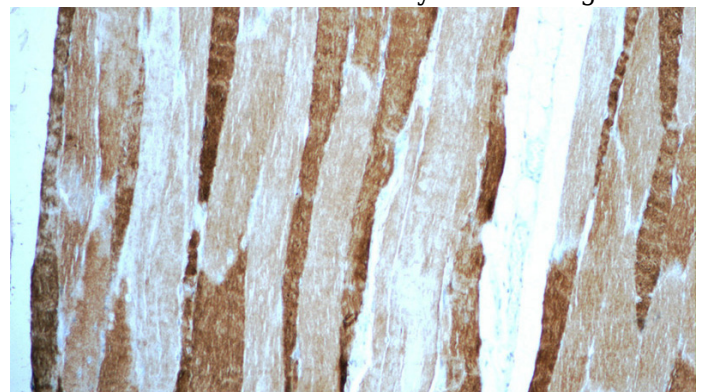
## Validations



Transfected HEK-293 cells were subjected to SDS PAGE followed by western blot with Catalog No:112928(MYH1 Antibody) at dilution of 1:1000



IP Result of anti-MYH1 (IP:Catalog No:112928, 5ug; Detection:Catalog No:112928 1:1000) with mouse skeletal muscle tissue lysate 4000ug.



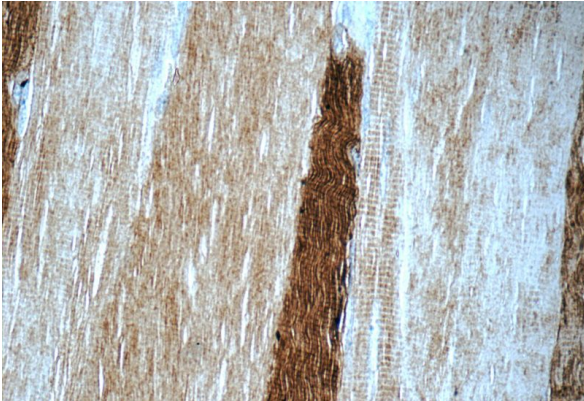
Immunohistochemistry of paraffin-embedded human skeletal muscle tissue slide using Catalog No:112928(MYH1 Antibody) at dilution of 1:50

# MYH1 antibody

Catalog Number: 112928

---

(under 10x lens)



Immunohistochemistry of paraffin-embedded human skeletal muscle tissue slide using Catalog No:112928(MYH1 Antibody) at dilution of 1:50 (under 40x lens)