

MYDGF antibody

Catalog Number: 112921

Product name

MYDGF antibody

WB: 1:200-1:1000

IHC: 1:20-1:200

Specificity

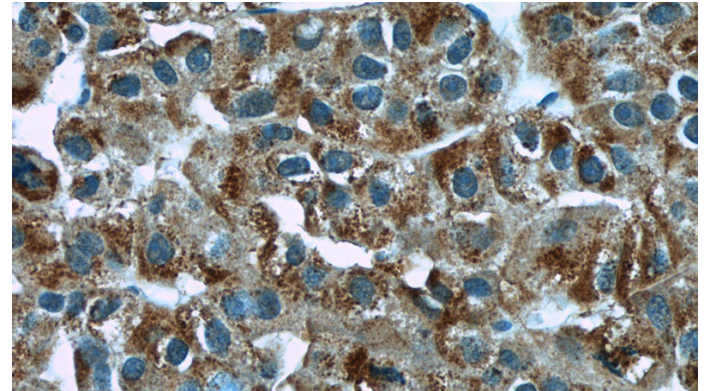
Human, Mouse; other species not tested.

IF: 1:10-1:100

Validations

Antibody description

MYDGF Rabbit Polyclonal antibody. Positive WB detected in DU 145 cells, COLO 320 cells, HeLa cells, Jurkat cells, Recombinant protein. Positive IF detected in HepG2 cells. Positive IHC detected in human liver cancer tissue, human colon cancer tissue, human lung cancer tissue. Observed molecular weight by Western-blot: 15-19 kDa



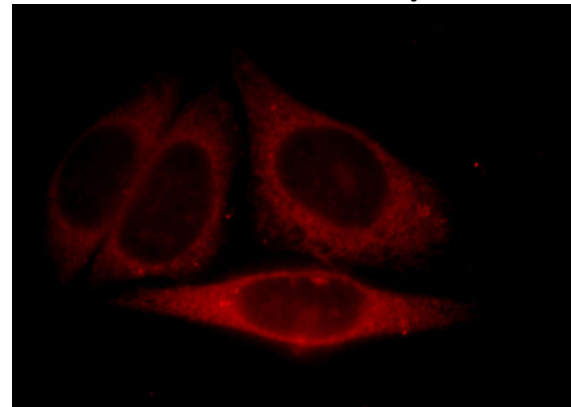
Preparation

This antibody was obtained by immunization of MYDGF recombinant protein (Accession Number: NM_019107). Purification method: Antigen affinity purified.

Immunohistochemistry of paraffin-embedded human liver cancer slide using Catalog No:112921(C19orf10 Antibody) at dilution of 1:50

Formulation

PBS with 0.1% sodium azide and 50% glycerol pH 7.3.



Storage

Store at -20°C. DO NOT ALIQUOT

Clonality

Polyclonal

Ig Type

Rabbit IgG

Applications

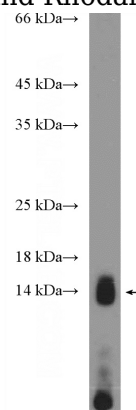
ELISA, IF, IHC, WB

Dilutions

Recommended Dilution:

IgG (red).

Immunofluorescent analysis of HepG2 cells, using C19orf10 antibody Catalog No:112921 at 1:25 dilution and Rhodamine-labeled goat anti-rabbit



MYDGF antibody



Catalog Number: 112921

DU 145 cells were subjected to SDS PAGE followed by western blot with Catalog

No:112921(C19orf10 Antibody) at dilution of 1:300