

MYBPC1 antibody



Catalog Number: 112913

Product name

MYBPC1 antibody

Specificity

Human, Mouse, Rat; other species not tested.

Antibody description

MYBPC1 Rabbit Polyclonal antibody. Positive WB detected in mouse skeletal muscle tissue, mouse pancreas tissue. Positive IHC detected in human skeletal muscle tissue, human bladder tissue, human heart tissue. Observed molecular weight by Western-blot: 135-140kd

Preparation

This antibody was obtained by immunization of Peptide (Accession Number: NM_002465). Purification method: Antigen affinity purified.

Formulation

PBS with 0.02% sodium azide and 50% glycerol pH 7.3.

Storage

Store at -20°C. DO NOT ALIQUOT

Clonality

Polyclonal

Ig Type

Rabbit IgG

Applications

ELISA, WB, IHC

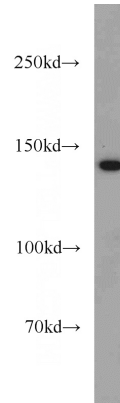
Dilutions

Recommended Dilution:

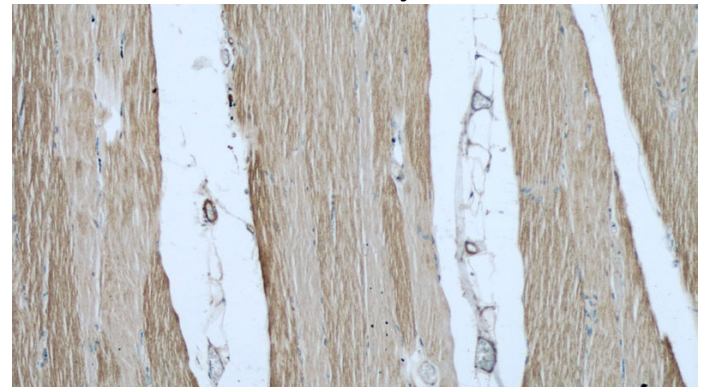
WB: 1:500-1:5000

IHC: 1:20-1:200

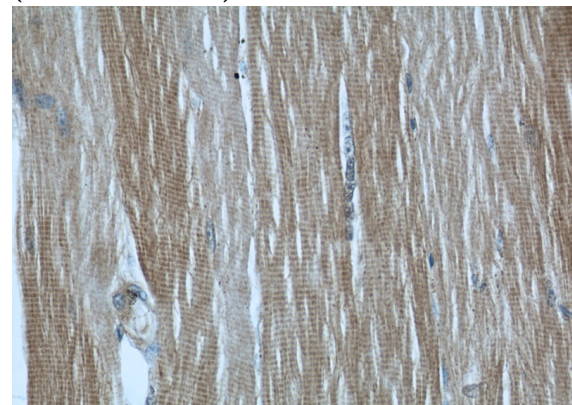
Validations



mouse skeletal muscle tissue were subjected to SDS PAGE followed by western blot with Catalog No:112913(MYBPC1 antibody) at dilution of 1:800



Immunohistochemical of paraffin-embedded human skeletal muscle using Catalog No:112913(MYBPC1 antibody) at dilution of 1:50 (under 10x lens)



Immunohistochemical of paraffin-embedded human skeletal muscle using Catalog No:112913(MYBPC1 antibody) at dilution of 1:50

MYBPC1 antibody



Catalog Number: 112913

(under 40x lens)