

# MYBBP1A antibody



Catalog Number: 112912

## Product name

MYBBP1A antibody

WB: 1:500-1:5000

IP: 1:200-1:2000

## Specificity

Human; other species not tested.

IHC: 1:20-1:200

IF: 1:20-1:200

## Antibody description

MYBBP1A Rabbit Polyclonal antibody. Positive FC detected in HepG2 cells. Positive IHC detected in human kidney tissue. Positive IF detected in HepG2 cells. Positive WB detected in HeLa cells, HEK-293 cells. Positive IP detected in HEK-293 cells. Observed molecular weight by Western-blot: 160kd

## Preparation

This antibody was obtained by immunization of MYBBP1A recombinant protein (Accession Number: NM\_014520). Purification method: Antigen affinity purified.

## Formulation

PBS with 0.02% sodium azide and 50% glycerol pH 7.3.

## Storage

Store at -20°C. DO NOT ALIQUOT

## Clonality

Polyclonal

## Ig Type

Rabbit IgG

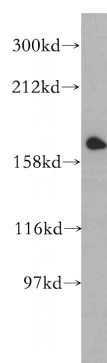
## Applications

ELISA, WB, IHC, IF, FC, IP

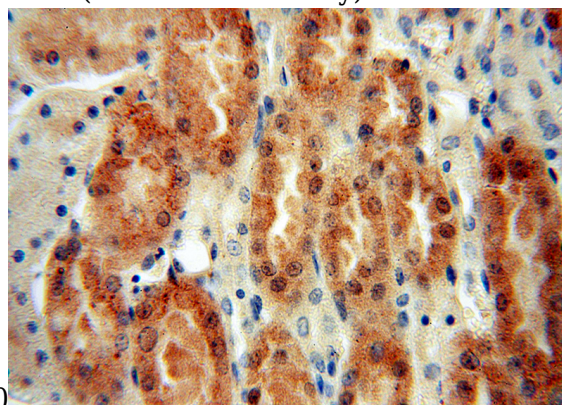
## Dilutions

Recommended Dilution:

## Validations



HeLa cells were subjected to SDS PAGE followed by western blot with Catalog No:112912(MYBBP1A antibody) at dilution of

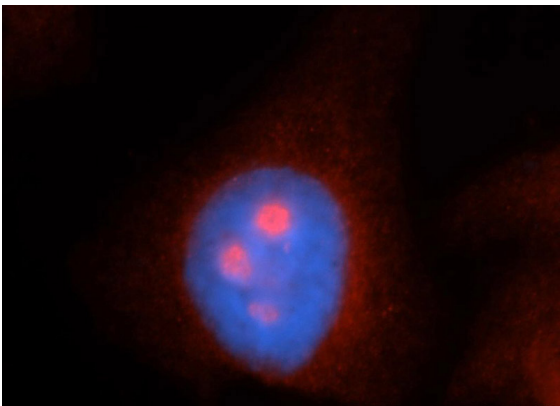


Immunohistochemical of paraffin-embedded human kidney using Catalog No:112912(MYBBP1A antibody) at dilution of 1:100 (under 40x lens)

# MYBBP1A antibody

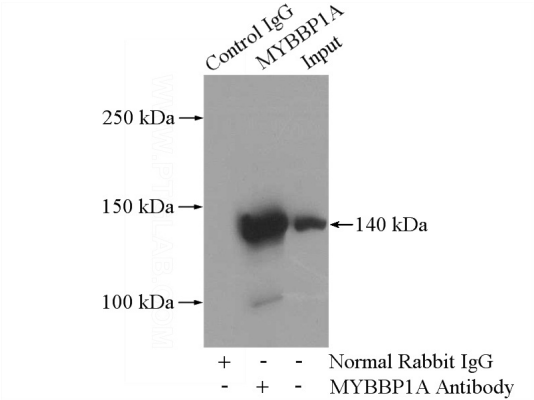


Catalog Number: 112912

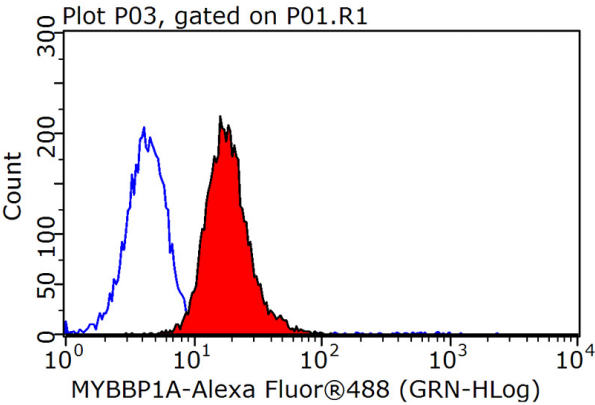


Immunofluorescent analysis of HepG2 cells, using MYBBP1A antibody Catalog No:112912 at 1:50 dilution and Rhodamine-labeled goat anti-rabbit IgG (red). Blue pseudocolor = DAPI (fluorescent

DNA dye).



IP Result of anti-MYBBP1A (IP:Catalog No:112912, 4ug; Detection:Catalog No:112912 1:500) with HEK-293 cells lysate 2800ug.



1X10<sup>6</sup> HepG2 cells were stained with 0.2ug MYBBP1A antibody (Catalog No:112912, red) and control antibody (blue). Fixed with 90% MeOH blocked with 3% BSA (30 min). Alexa Fluor 488-conjugated AffiniPure Goat Anti-Rabbit IgG(H+L) with dilution 1:1500.