

MUC1/CA15-3 antibody



Catalog Number: 112888

Product name

MUC1/CA15-3 antibody

IP: 1:200-1:2000

IHC: 1:20-1:200

Specificity

Human; other species not tested.

Antibody description

MUC1/CA15-3 Rabbit Polyclonal antibody. Positive IHC detected in human lung cancer tissue, human breast cancer tissue, human meningioma tissue, human ovary tumor tissue. Positive FC detected in MCF-7 cells. Positive IP detected in A431 cells. Positive WB detected in A431 cells. Observed molecular weight by Western-blot: 122 kDa

Preparation

This antibody was obtained by immunization of Peptide (Accession Number: J05582). Purification method: Antigen affinity purified.

Formulation

PBS with 0.02% sodium azide and 50% glycerol pH 7.3.

Storage

Store at -20°C. DO NOT ALIQUOT

Clonality

Polyclonal

Ig Type

Rabbit IgG

Applications

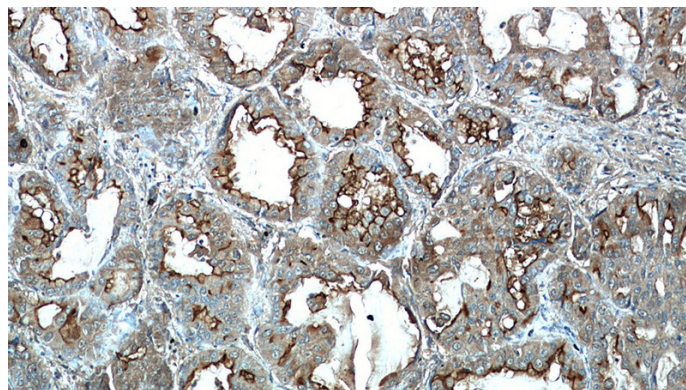
ELISA, WB, FC, IHC, IP

Dilutions

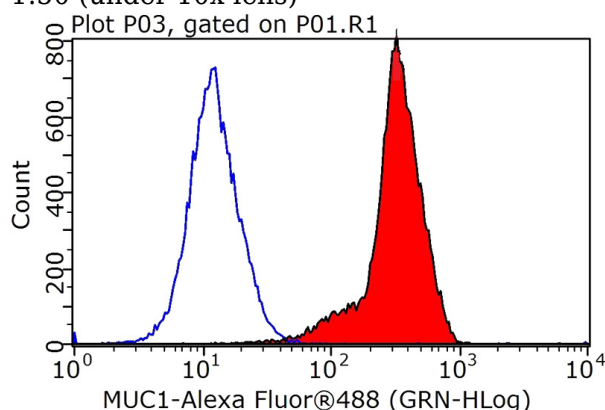
Recommended Dilution:

WB: 1:500-1:5000

Validations



Immunohistochemical of paraffin-embedded human lung cancer using Catalog No:112888(CA15-3,MUC1 antibody) at dilution of 1:50 (under 10x lens)

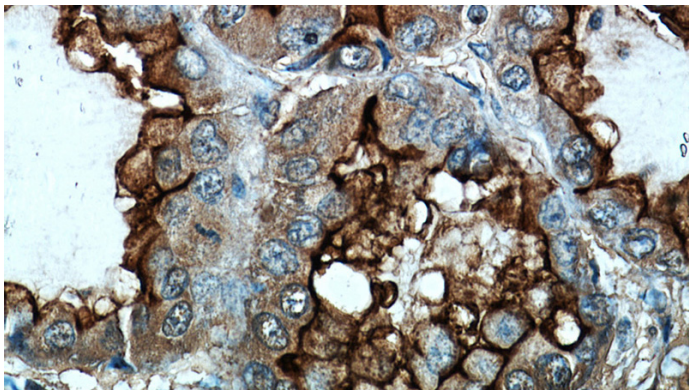


1X10⁶ MCF-7 cells were stained with 0.2ug CA15-3,MUC1 antibody (Catalog No:112888, red) and control antibody (blue). Fixed with 90% MeOH blocked with 3% BSA (30 min). Alexa Fluor 488-conjugated AffiniPure Goat Anti-Rabbit IgG(H+L) with dilution 1:1000.

MUC1/CA15-3 antibody



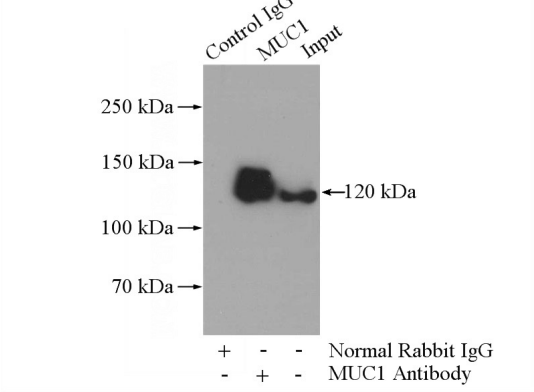
Catalog Number: 112888



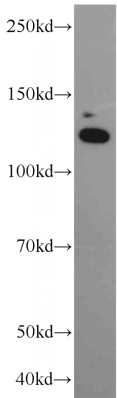
Immunohistochemical of paraffin-embedded human lung cancer using Catalog No:112888(CA15-3,MUC1 antibody) at dilution of

A431 cells were subjected to SDS PAGE followed by western blot with Catalog No:112888(CA15-3,MUC1 antibody) at dilution of

1:1500



IP Result of anti-CA15-3,MUC1 (IP:Catalog No:112888, 4ug; Detection:Catalog No:112888 1:700) with A431 cells lysate 1520ug.



1:50 (under 40x lens)